

WAAS
CH 69244
W18A

APP CRS
174°

Rwy Idg	4000
TDZE	1476
Apt Elev	1488

RNAV (GPS) RWY 18

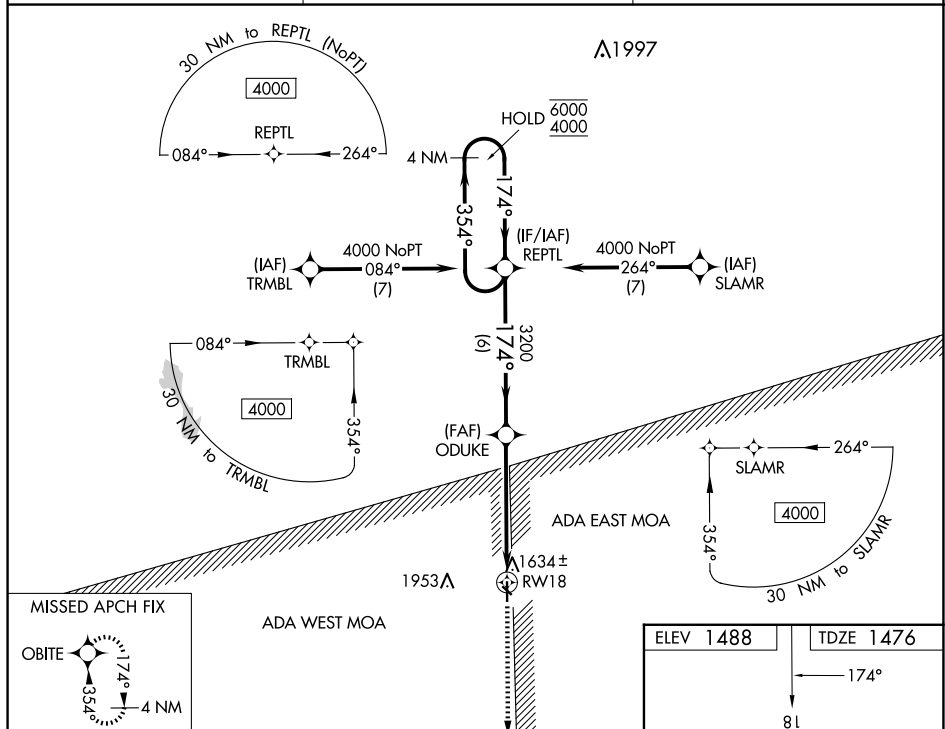
RNP APCH-GPS.

T Rwy 18 helicopter visibility reduction below 1 SM NA. For uncompensated
A Baro-VNAV systems, LNAV/VNAV NA below -20°C or above 54°C.
 Baro-VNAV and VDP NA when using Hebron Muni altimeter setting.

MISSED APPROACH: Climb to 4000 direct OBITE and hold.

ASOS
123.825

KANSAS CITY CENTER
134.9 363.2

UNICOM
122.8 (CTAF) **L**

MISSED APCH FIX

ADA WEST MOA

ADA EAST MOA

1953A

18

ELEV 1488

TDZE 1476

— 17 —

MIRL Rwy 18-36 **L**
REIL Rwy 18 and 36 **L**

CONCORDIA, KANSAS
Orig-A 08SEP22

39°33'N-97°39'W

BLOSSER MUNI (CNK)
RNAV (GPS) RWY 18