

VOR/DME SHY
108.4
Chan 21

APP CRS
318°

Rwy Idg
TDZE **875**
Apt Elev **876**

VOR RWY 32

GRAND GLAIZE-OSAGE BEACH (K15)

▼

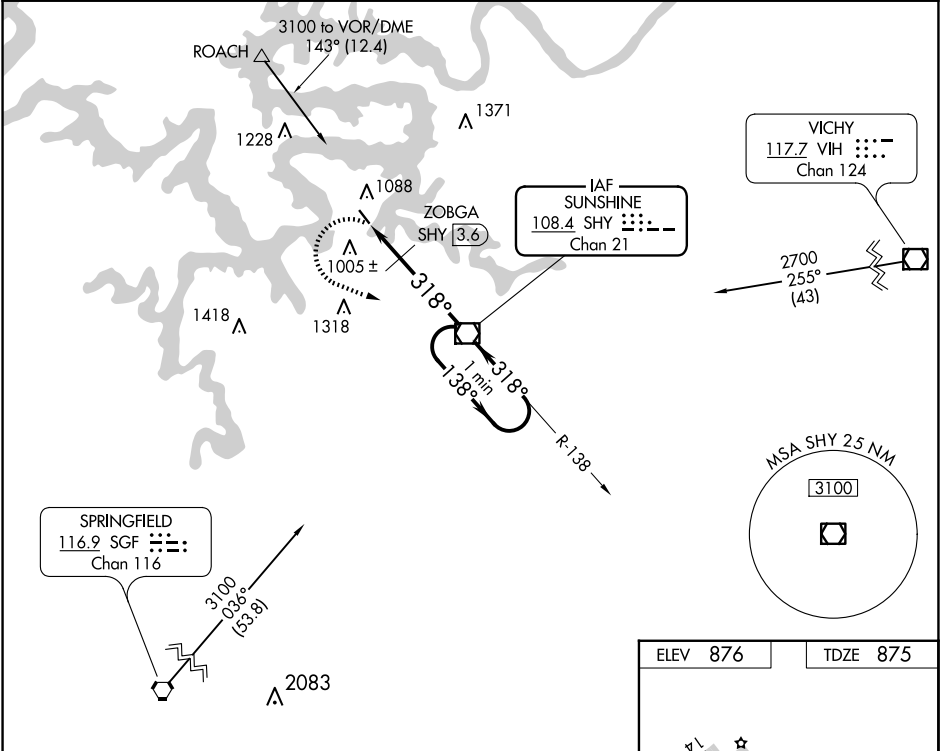
NA

Helicopter visibility reduction below 1 SM NA. Procedure NA at night.
Use Kaiser Lake Ozark altimeter setting; when not received, use
Camdenton altimeter setting and increase all MDA 40 feet.

MISSED APPROACH: Climbing left turn to 2700 direct SHY VOR/DME and hold.

MIZZU APP CON
124.1 353.925

UNICOM
122.8 (CTAF)



2700 SHY

VGSI and descent angles not coincident (VGSI Angle 3.50/TCH 46).

SHY VOR/DME

One Minute Holding Pattern

* 1460 when using Camdenton altimeter setting.

ZOBGA SHY 3.6

SHY 5.3

1420

318°

138°

2700

CATEGORY	A	B	C	D
S-32	1420-1 545 (600-1)		NA	
CIRCLING	1420-1 544 (600-1)		NA	
ZOBGA FIX MINIMUMS (DME REQUIRED)				
S-32	1280-1 405 (500-1)		NA	
CIRCLING	1420-1 544 (600-1)		NA	

ELEV 876

TDZE 875

MRL Rwy 14-32

3205 X 60

0.08% UP

318° 5.3 NM from FAF

FAF to MAP 5.3 NM

Knots	60	90	120	150	180
Min:Sec	5:18	3:32	2:39	2:07	1:46