

WAAS

CH **48932**

W14A

APP CRS

140°

Rwy Idg

3205

TDZE

876

Apt Elev

876

RNAV (GPS) RWY 14

GRAND GLAIZE-OSAGE BEACH (K15)

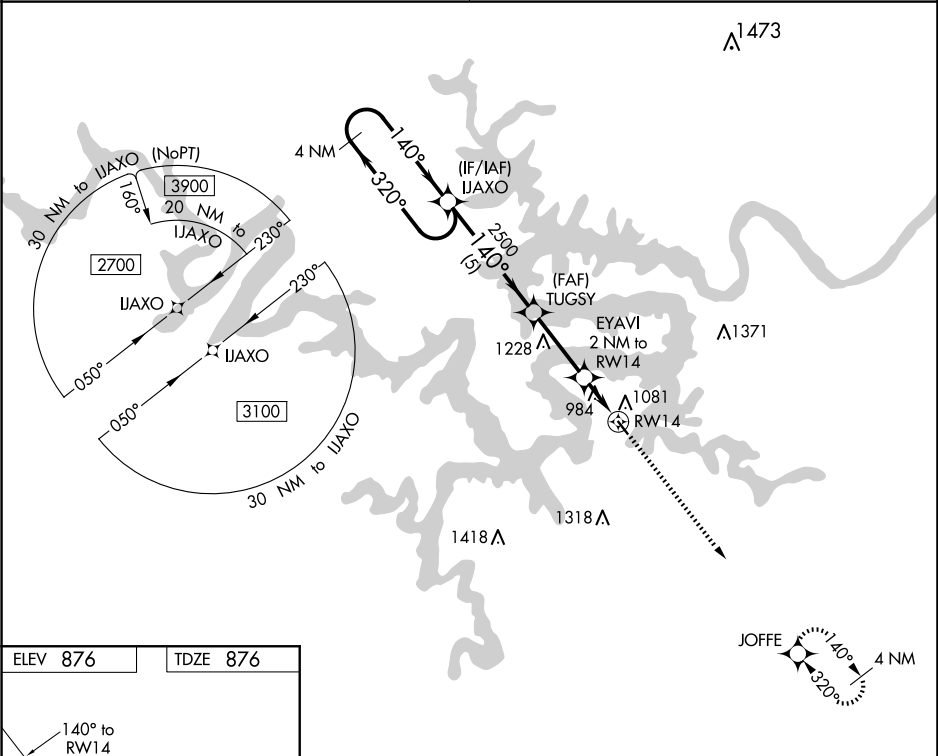
▼

NA

Use Kaiser Lake Ozark altimeter setting; when not received, use Camdenton altimeter setting and increase all MDA 40 feet. DME/DME RNP- 0.3 NA. Procedure NA at night. Helicopter visibility reduction below 1 SM NA.

MISSED APPROACH: Climb to 2700 direct JOFFE and hold.

MIZZU APP CON 124.1 353.925	UNICOM 122.8 (CTAF) 0
---------------------------------------	---------------------------------



ELEV 876

TDZE 876

140° to RWY 14

3205 x 60

0.6% UP

MIRL Rwy 14-32 0

4 NM Holding Pattern

2700 ← 320° 140° →

IJAXO

2500

TUGSY

EYAVI
2 NM to RW14

RW14

Visual Segment - Obstacles.

2700

JOFFE

↑

✧

5 NM

3 NM

2 NM

CATEGORY	A	B	C	D
LP MDA	1300-1	424 (500-1)	NA	
LNAV MDA	1360-1	484 (500-1)	NA	
CIRCLING	1420-1	544 (600-1)	NA	