

WAAS CH 70444 W31A	APP CRS 314°	Rwy Idg 3203 TDZE 891 Apt Elev 891
--	------------------------	---

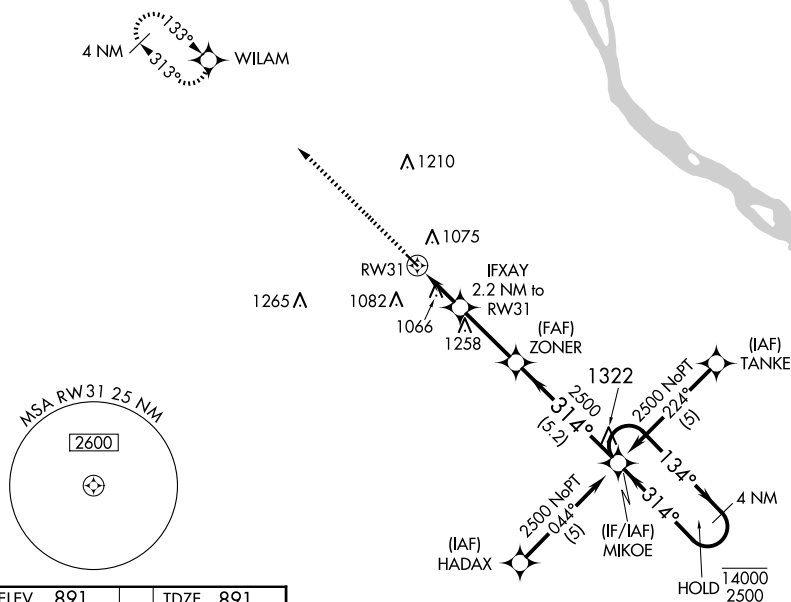
RNAV (GPS) RWY 31
BOWLING GREEN MUNI (H19)

RNP APCH-GPS.

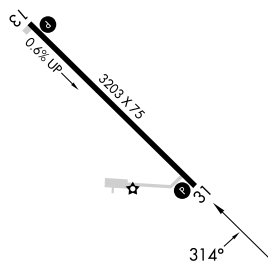
T Procedure NA at night. Rwy 31 helicopter visibility reduction
A NA below 1 SM NA. Use Quincy altimeter setting.

MISSED APPROACH: Climb to 2500 direct WILAM and hold.

UIN ASOS 121.425	KANSAS CITY CENTER 126.225 317.775	UNICOM 122.8 (CTAF) 0
----------------------------	--	---------------------------------



ELEV 891		TDZE 891
----------	--	----------



The diagram illustrates the IFR enroute chart segment from RW31 to MIKOE. Key features include:

- Scale Bar:** 2500 feet.
- Compass Rose:** Indicated by a star symbol.
- Route Segment 1:** From RW31 to IFXAY, heading 162°, distance 2.2 NM.
- Route Segment 2:** From IFXAY to ZONER, heading 314°, distance 2.8 NM. The angle between the previous segment and this one is 3.00° TCH 45°.
- Route Segment 3:** From ZONER to MIKOE, heading 134°, distance 5.2 NM.
- Holding Pattern:** Shown at MIKOE, labeled "4 NM Holding Pattern".

CATEGORY	A	B	C	D
LP MDA	1340-1	449 (500-1)		NA
LNAV MDA	1420-1	529 (600-1)		NA
C CIRCLING	1480-1	589 (600-1)		NA