


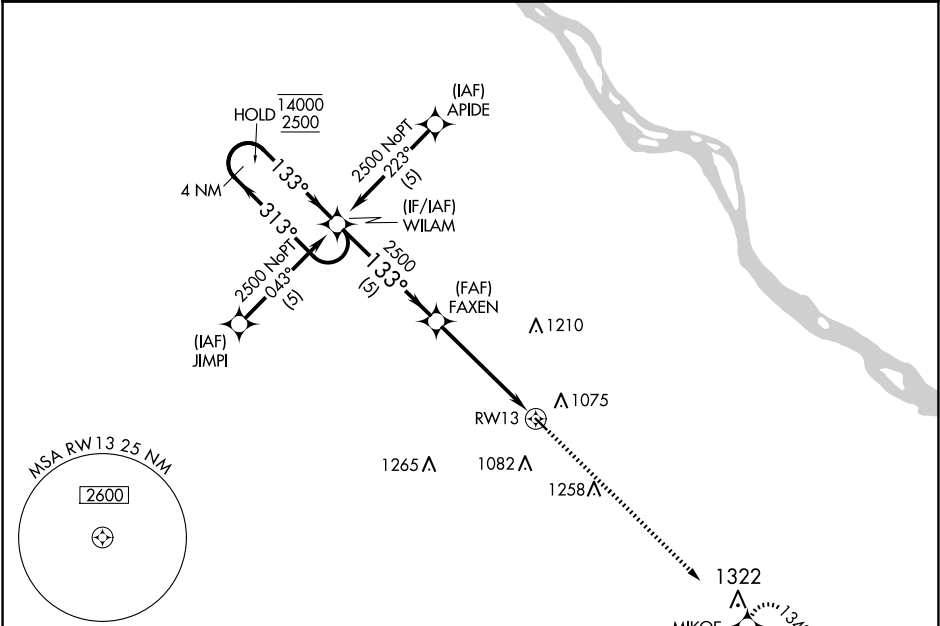
WAAS CH 77644 W13A	APP CRS 133°	Rwy Idg TDZE 889 Apt Elev 891	3203
--	------------------------	---	-------------

RNAV (GPS) RWY 13

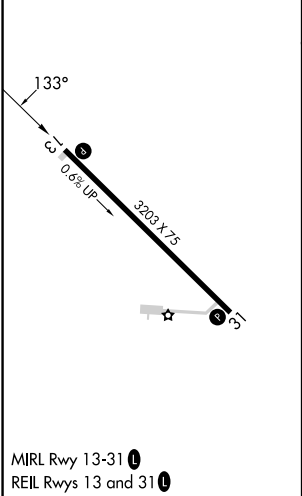
BOWLING GREEN MUNI (H19)


RNP APCH-GPS.		MISSED APPROACH: Climb to 2500 direct MIKOE and hold.
	Circling Rwy 31 NA at night. Baro-VNAV NA.  NA Use Quincy altimeter setting.	

UIN ASOS 121.425	KANSAS CITY CENTER 126.225 317.775	UNICOM 122.8 (CTAF) 0
----------------------------	--	---------------------------------



ELEV 891	TDZE 889
-----------------	-----------------



4 NM Holding Pattern		WILAM	FAXEN	2500	MIKOE
14000 2500		← 313° 133° →	133°	2500	
GP 3.00° TCH 43					
			5 NM	5 NM	
CATEGORY	A	B	C	D	
LPV DA	1236-1	347 (400-1)	NA		
LNAV/VNAV DA	1236-1	347 (400-1)	NA		
LNAV MDA	1360-1	471 (500-1)	NA		
 CIRCLING	1480-1	589 (600-1)	NA		