

VOR/DME MBS
114.35
Chan **90Y**

APP CRS
125°

Rwy Idg
TDZE
Apt Elev
602

N/A
N/A
602

VOR/DME-A

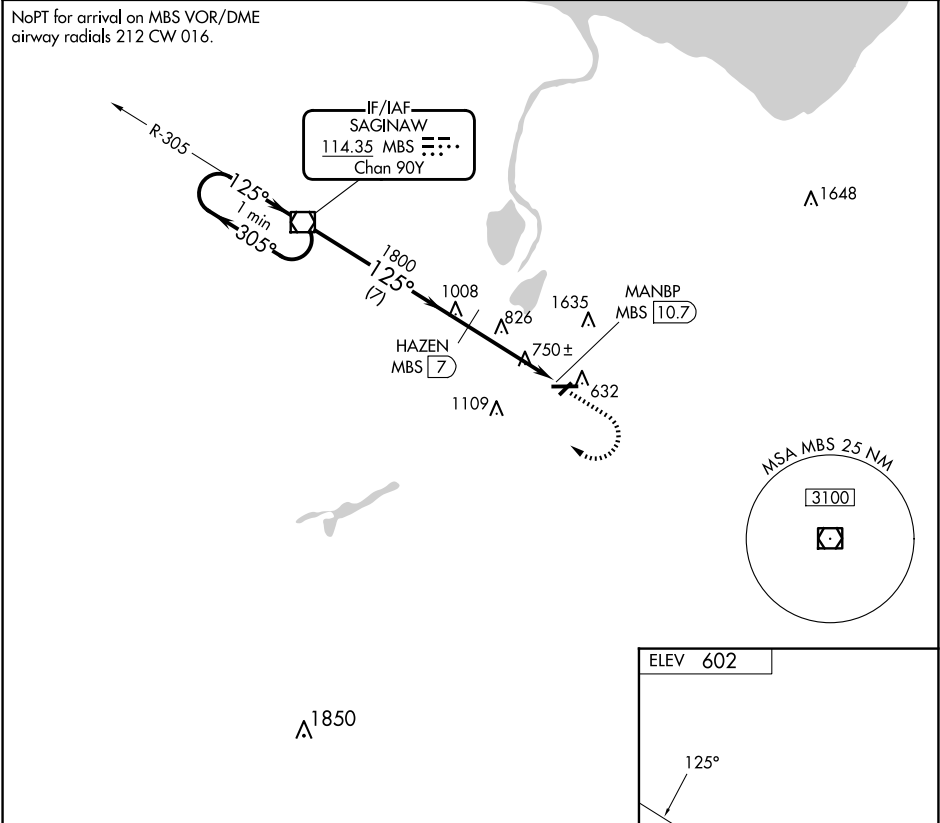
SAGINAW COUNTY/H W BROWNE (HYX)

⚠

Circling to Rwy 5/23 NA at night. When local altimeter setting not received, use Saginaw MBS Intl altimeter setting and increase all MDA 40 feet and increase Circling Cat C visibility ¼ SM. Circling NA for Cat C north of Rwy 10-28.

MISSED APPROACH: Climb to 1900 then climbing right turn to 3000 direct MBS VOR/DME and hold.

AWOS-3PT 118,325	GREAT LAKES APP CON ★ 120,95 235,625	UNICOM 122.8 (CTAF) 0
----------------------------	--	---------------------------------



One Minute Holding Pattern

MBS VOR/DME

1900

3000

MBS

3000

←305°

→125°

125°

HAZEN MBS (7)

1800

MANBP MBS (10.7)

7 NM

3.7 NM

CATEGORY	A	B	C	D
CIRCLING	1160-1	558 (600-1)	1460-2½ 858 (900-2½)	NA

ELEV 602

125°

10

5002 X 100

252 X 60

28

REIL Rwy 10 0

HIRL Rwy 10-28 0

MIRL Rwy 5-23 0