

⚠

NA

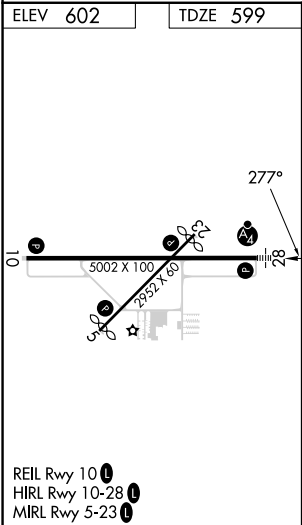
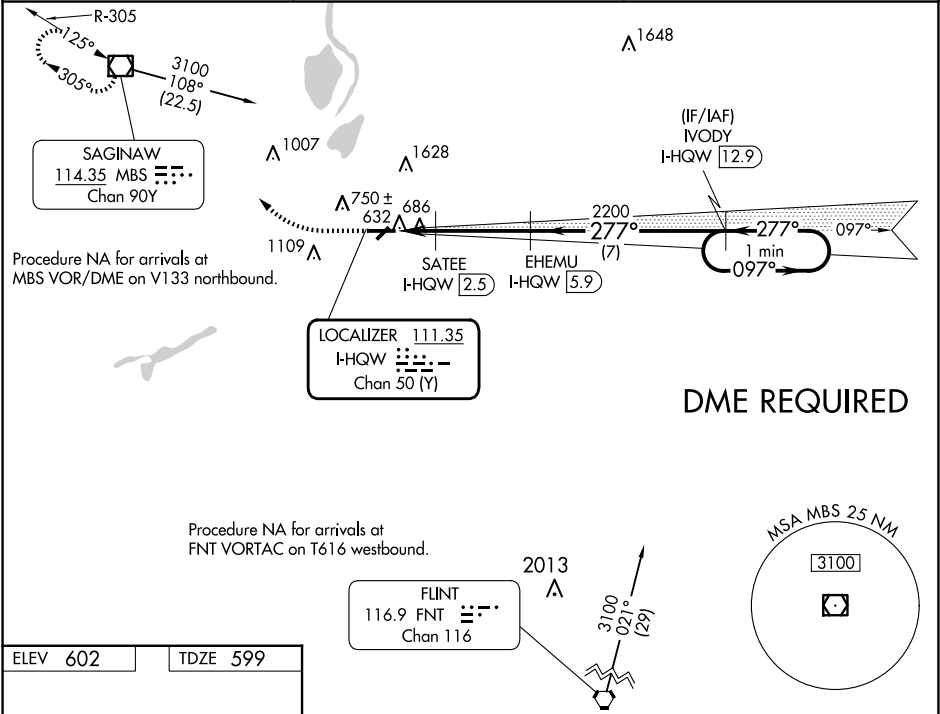
Inoperative table does not apply to S-ILS 28.  
DME required. Circling Rwy 5, 23 NA at night.  
Circling NA for Cat C north of Rwy 10-28.

⚠

MALS

MISSED APPROACH: Climb to 1200 then climbing right turn to 4000 direct MBS VOR/DME and hold, continue climb-in-hold to 4000.

AWOS-3PT 118.325	GREAT LAKES APP CON★ 120.95 235.625	UNICOM 122.8 (CTAF) 0
---------------------	--	--------------------------



<div><div>1200</div><div>4000</div><div>MBS</div></div>				One Minute Holding Pattern	
<div><div>*LOC only</div><div>SATEE I-HQW 2.5</div><div>EHEMU I-HQW 5.9</div><div>IVODY I-HQW 12.9</div><div>277°</div><div>097°</div><div>3100</div><div>GS 3.00°</div><div>TCH 44</div></div>					
<div><div>0.9</div><div>0.6</div><div>3.4 NM</div><div>7 NM</div></div>					
CATEGORY	A	B	C	D	
S-ILS 28	802- <sup>3</sup> / <sub>4</sub>		203 (200- <sup>3</sup> / <sub>4</sub> )	NA	
S-LOC 28	940- <sup>3</sup> / <sub>4</sub>		341 (400- <sup>3</sup> / <sub>4</sub> )	NA	
CIRCLING	1100-1		498 (500-1)	1460-2 <sup>1</sup> / <sub>2</sub>	858 (900-2 <sup>1</sup> / <sub>2</sub> ) NA