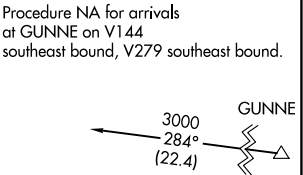
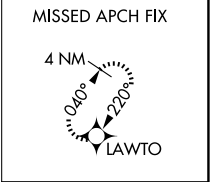
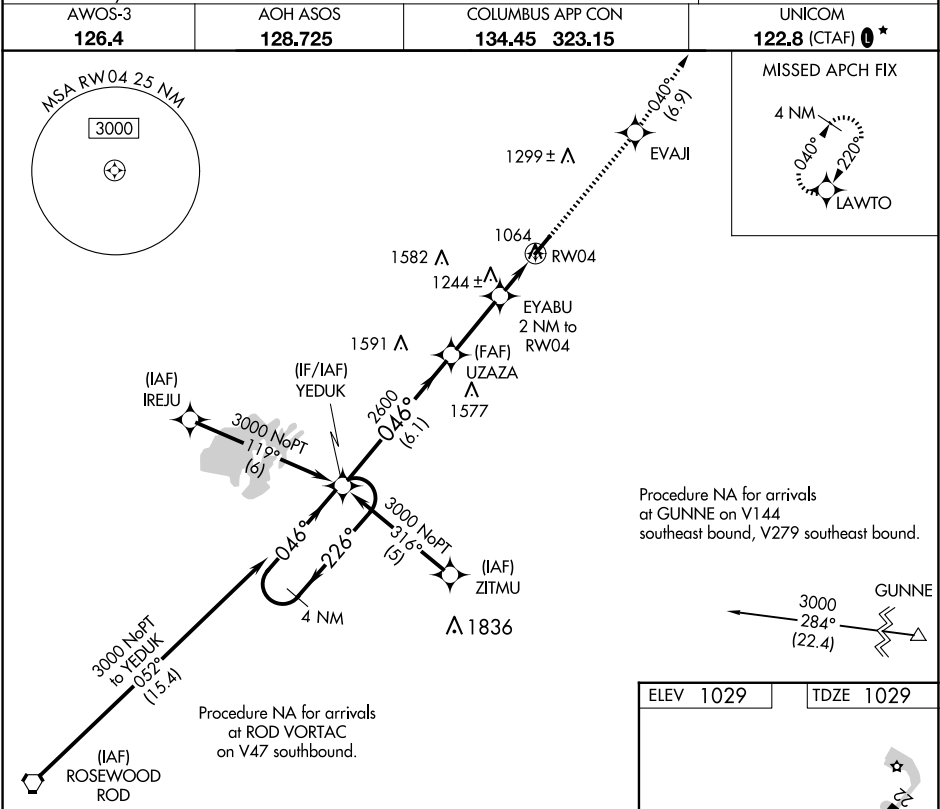


APP CRS	Rwy Idg	4797
046°	TDZE	1029
	Apt Elev	1029

RNAV (GPS) RWY 4

HARDIN COUNTY (I95)

RNP APCH - GPS.	Rwy 4 helicopter visibility reduction below 1 SM NA. Procedure NA at night. Circling NA for Cat D NW of Rwy 4-22. When local altimeter setting not received, use Lima altimeter setting and increase all MDAs 60 feet and LNAV visibility Cat C ¼ SM, and Circling visibility Cat C ¼ SM.			MISSED APPROACH: Climb to 3000 direct EVAJI and on track 040° to LAWTO and hold.
AWOS-3 126.4	AOH ASOS 128.725	COLUMBUS APP CON 134.45 323.15	UNICOM 122.8 (CTAF) 0 *	



4 NM Holding Pattern		3000	EVAJI	tr 040°	LAWTO
YEDUK		3000	226°	046°	046°
2600		UZAZA	EYABU 2 NM to RW04	3.04° TCH 40	RW04
1700		6.1 NM	2.8 NM	2 NM	
CATEGORY	A	B	C	D	
LNAV MDA	1560-1	531 (600-1)	1560-1½ 531 (600-1½)	1560-1¾ 531 (600-1¾)	
CIRCLING	1580-1 551 (600-1)	1620-1 591 (600-1)	1620-1½ 591 (600-1½)	1620-2 591 (600-1)	

