

APP CRS
226°

Rwy Idg
4797

TDZE
1023

Apt Elev
1029

RNAV (GPS) RWY 22

HARDIN COUNTY (I95)

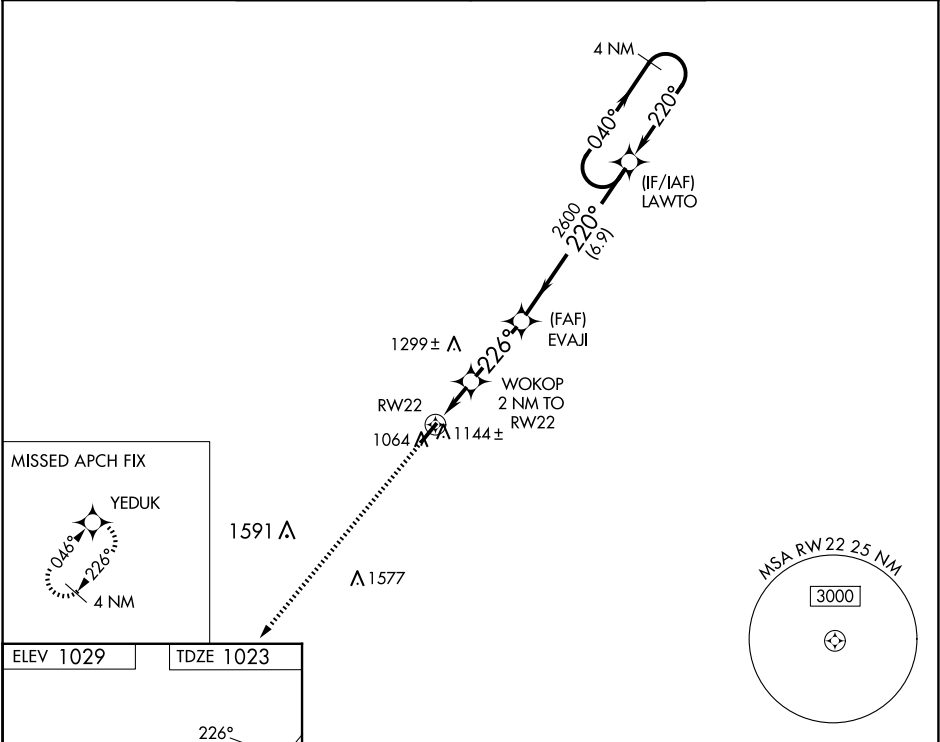
▼


NA

RNP APCH - GPS.
Rwy 22 helicopter visibility reduction below 1 SM NA. Procedure NA at night. Circling NA for Cat D NW of Rwy 04-22. When local altimeter setting not received, use Lima altimeter setting and increase all MDAs 60 feet and LNAV visibility Cat C 1/8 SM and Circling visibility Cat C 1/4 SM.

MISSED APPROACH: Climb to 3000 direct YEDUK and hold.

AWOS-3 126.4	AOH ASOS 128.725	COLUMBUS APP CON 134.45 323.15	UNICOM 122.8 (CTAF) 0 *
-----------------	---------------------	-----------------------------------	----------------------------



MIRL Rwy 4-22 

Visual Segment - Obstacles.

4 NM
Holding Pattern

CATEGORY	A	B	C	D
LNAV MDA	1460-1	437 (500-1)	1460-1¼ 437 (500-1¼)	1460-1½ 437 (500-1½)
CIRCLING	1580-1 551 (600-1)	1620-1 591 (600-1)	1620-1½ 591 (600-1½)	1620-2 591 (600-2)