

WAAS CH 56248 W17A	APP CRS 173°	Rwy Idg TDZE 889 Apt Elev 892	5799
--	------------------------	---	-------------

RNAV (GPS) RWY 17

WILLIAM R POGUE MUNI (OWP)

RNP APCH - GPS.

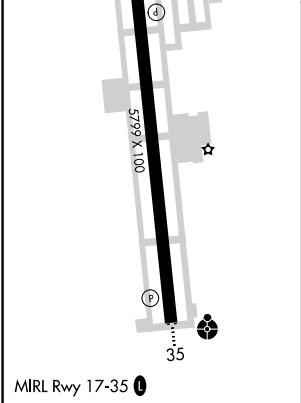
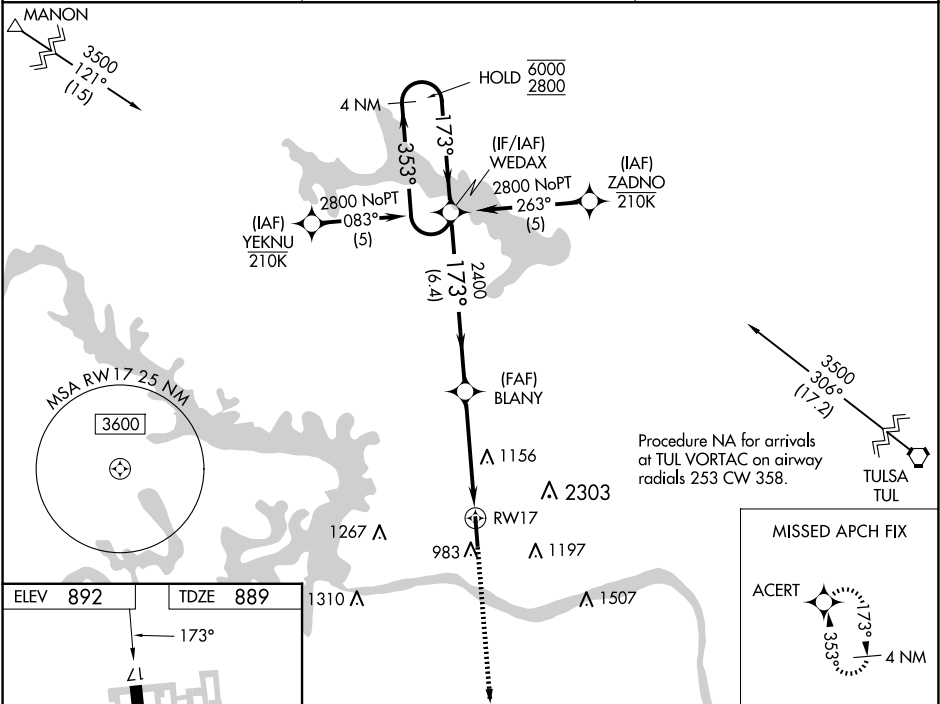
▼

▲

Rwy 17 helicopter visibility reduction below ¾ SM NA. For uncompensated Baro-VNAV systems, LNAV/VNAV NA below -16°C or above 54°C. Circling NA for Cat C east of Rwy 17-35.
When local altimeter setting not received, use TUL altimeter setting and increase LPV DA to 1206 feet and all visibilities ¼ SM; increase LNAV/VNAV DA to 1443 feet and all visibilities ¼ SM; increase all MDAs 80 feet and LNAV visibility Cat C ¼ SM, and Circling visibility Cat C ¼ SM. Baro-VNAV and VDP NA when using TUL altimeter setting.

MISSED APPROACH:
Climb to 2800 direct ACERT and hold.

AWOS-3T 118.325	TULSA APP CON 124.0 338.3	UNICOM 122.7 (CTAF)
---------------------------	-------------------------------------	-------------------------------



4 NM Holding Pattern WEDAX		VGSI and RNAV glidepath not coincident (VGSI Angle 3.00/TCH 31).		2800	ACERT
6000 ← 353°		173° →		2400	1.7 NM to RWY17
GP 3.00° TCH 45		2400		2400	RWY17
6.4 NM		2.9 NM		1.7 NM	
CATEGORY	A	B	C	D	
LPV DA	1139-¾		250 (300-¾)	NA	
LNAV/VNAV DA	1376-1⅓		487 (500-1⅓)	NA	
LNAV MDA	1460-1	571 (600-1)	1460-1⅓	571 (600-1⅓)	NA
CIRCLING	1460-1	568 (600-1)	1460-1⅓	568 (600-1⅓)	NA

SC-1, 07 AUG 2025 to 04 SEP 2025

SC-1, 07 AUG 2025 to 04 SEP 2025