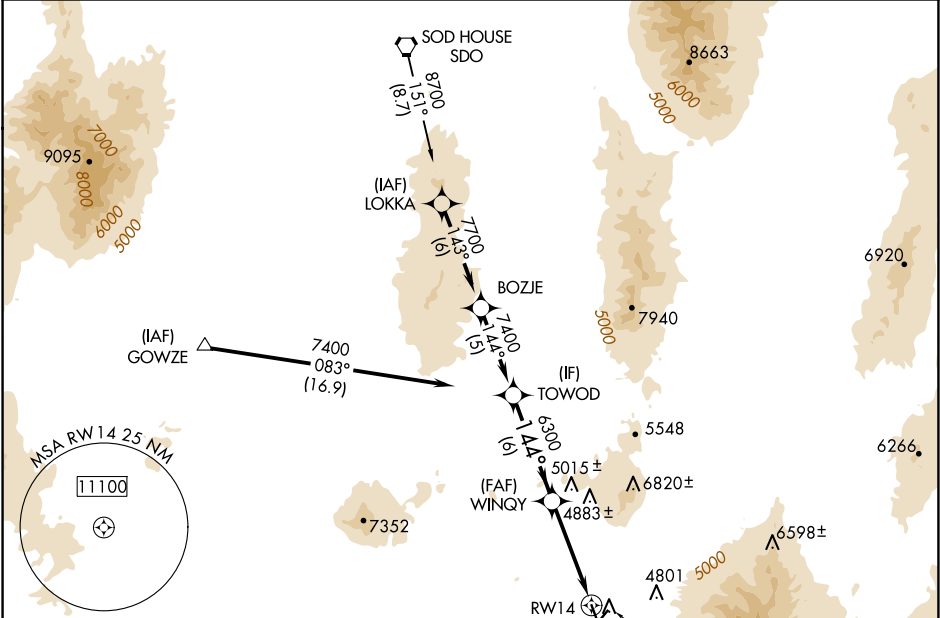


WAAS CH <b>62902</b> <b>W14A</b>	APP CRS <b>144°</b>	Rwy Idg TDZE Apt Elev	<b>7000</b> <b>4304</b> <b>4308</b>
--	------------------------	-----------------------------	---

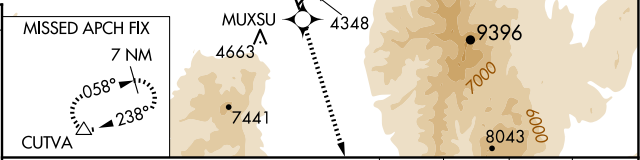
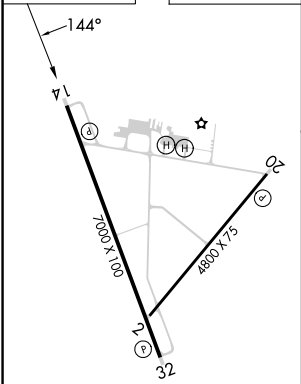
RNAV (GPS) RWY 14  
WINNEMUCCA MUNI (WMC)

RNP APCH.	MISSED APPROACH: Climb to 12000 direct MUXSU and via 147° track to CUTVA and hold, continue climb-in-hold to 12000.
<p>▼ ▲</p> <p>If local altimeter setting not received, use Battle Mountain altimeter setting and increase all DAs/MDAs 140 feet. VDP NA when using Battle Mountain altimeter setting.</p>	

ASOS <b>120.175</b>	SALT LAKE CITY CENTER <b>132.25 338.35</b>	UNICOM <b>122.8 (CTAF) 0</b>
------------------------	---	---------------------------------



ELEV 4308	TDZE 4304
-----------	-----------



Procedure	TOWOD	WINQY	MUXSU	CUTVA
Turn	NA	144°	147° tr	△
GP 3.00°	7400	6300	*2.4 NM to RW14	
TCH 40	6 NM	3.7 NM	2.4 NM	
CATEGORY	A	B	C	D
LPV DA	4843-2 539 (600-2)			
RNAV MDA	5100-1 796 (800-1)	5100-1¼ 796 (800-1¼)	5100-2¼ 796 (800-2¼)	5100-2½ 796 (800-2½)

MIRL Rwy 2-20  
MIRL Rwy 14-32 0  
REIL Rwy 20, 14, and 32 0