

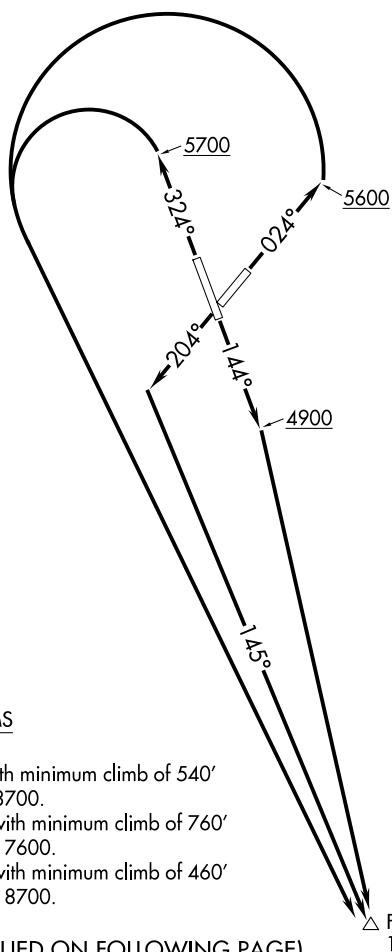
AL-6471 (FAA)

FESKO ONE DEPARTURE (OBSTACLE) (RNAV)

WINNEMUCCA MUNI (WMC)
WINNEMUCCA, NEVADA

RNAV 1 - GPS

SALT LAKE CITY CENTER	
132.25	338.35
ASOS	
120.175	
CTAF	
122.8	



TAKEOFF MINIMUMS

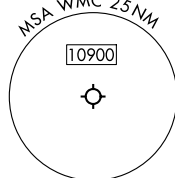
Rwy 14: Standard.

Rwy 2: Standard with minimum climb of 540' per NM to 8700.

Rwy 20: Standard with minimum climb of 760' per NM to 7600.

Rwy 32: Standard with minimum climb of 460' per NM to 8700.

(NOTES CONTINUED ON FOLLOWING PAGE)



NOTE: Chart not to scale.

DEPARTURE ROUTE DESCRIPTION

TAKEOFF RUNWAY 2: Climb on heading 024° to 5600, then left turn direct FESKO, thence. . . .

TAKEOFF RUNWAY 14: Climb on heading 144° to 4900, then direct FESKO, thence. . .

TAKEOFF RUNWAY 20: Climb on heading 204° to intercept course 145° to FESKO, thence . . .

TAKEOFF RUNWAY 32: Climb on heading 324° to 5700, then left turn direct FESKO, thence. . . .

...cross FESKO at or above 11 000 before proceeding on assigned route of flight.

FESKO ONE DEPARTURE (OBSTACLE) (RNAV)

(FESKO1.FESKO) 05OCT23

WINNEMUCCA, NEVADA
WINNEMUCCA MUNI (WMC)

SW-4, 07 AUG 2025 to 04 SEP 2025

SW-4, 07 AUG 2025 to 04 SEP 2025