

WAAS  
CH **90327**  
**W32A**

APP CRS  
**315°**

Rwy Idg  
TDZE **665**  
Apt Elev **678**

RNAV (GPS) RWY 32

CHEROKEE COUNTY (JSO)

▼

⚠

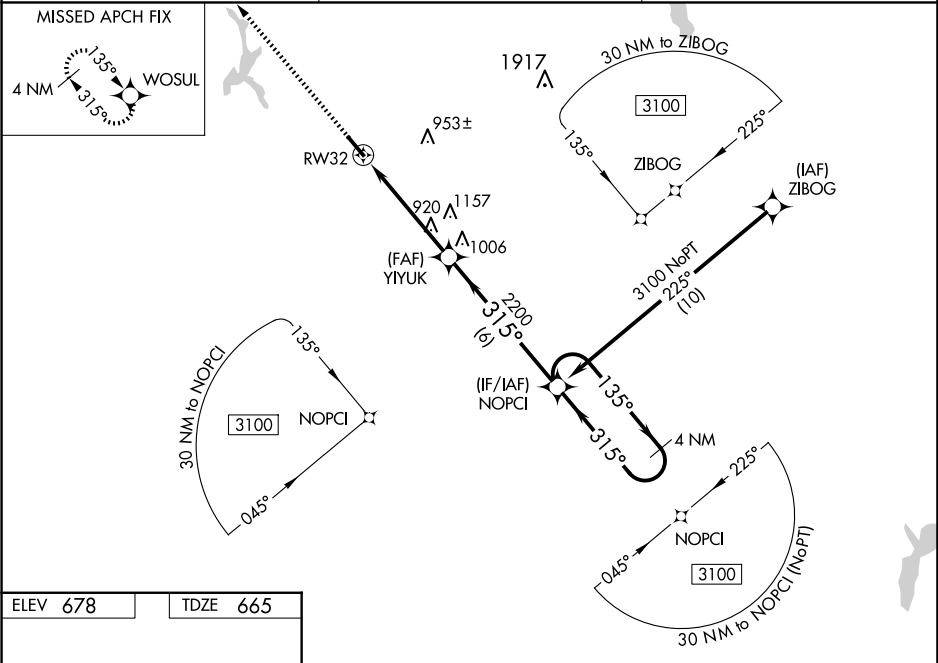
Baro-VNAV NA when using Nacogdoches altimeter setting. For uncompensated Baro-VNAV systems, LNAV/VNAV NA below -16°C (4°F) or above 54°C (130°F). When local altimeter setting not received, use Nacogdoches altimeter setting and increase DA 118 feet, increase all MDA 120 feet and LPV, LNAV/VNAV visibility all Cats ¼ mile, LNAV and Circling Cat C visibility ¾ mile. When VGSI inop, Straight-in/Circling Rwy 32 procedure NA at night. DME/DME RNP-0.3 NA. Visibility reduction by helicopters NA.

MISSED APPROACH: Climb to 3100 direct WOSUL and hold.

AWOS-3  
**119.075**

LONGVIEW APP CON★  
**128.75 379.15**

UNICOM  
**122.7 (CTAF) ①**



ELEV 678

TDZE 665

REIL Rwy 14 ①

MIRL Rwy 14-32 ①

3100 WOSUL

YIYUK 2200

NOPCI

4 NM Holding Pattern

135° → 3100

← 315°

GP 3.00°

TCH 30

4.8 NM

6 NM

CATEGORY	A	B	C	D
LPV DA	915-1	250 (300-1)		NA
LNAV/VNAV DA	915-1	250 (300-1)		NA
LNAV MDA	1220-1	555 (600-1)	1220-1½ 555 (600-1½)	NA
CIRCLING	1220-1	542 (600-1)	1280-1¾ 602 (700-1¾)	NA