

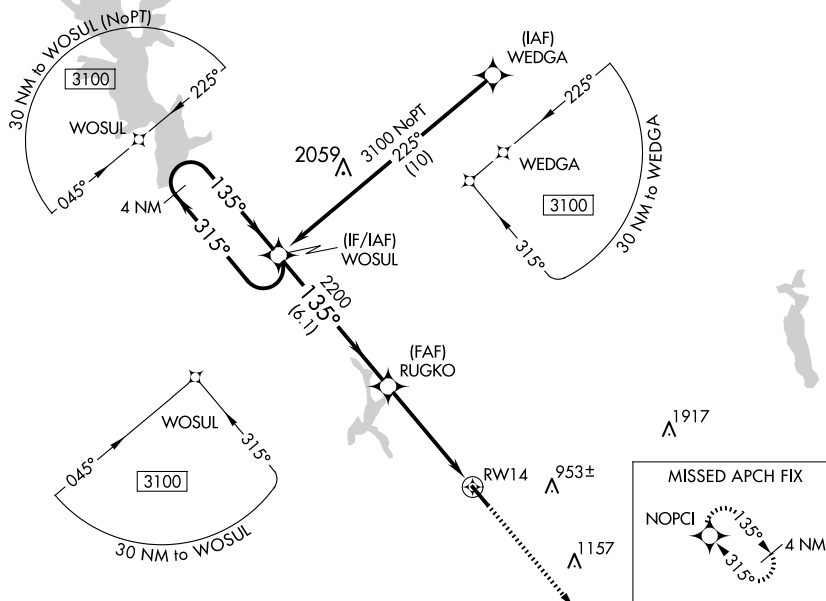
WAAS CH 56429 W14A	APP CRS 135°	Rwy Idg 5006 TDZE 678 Apt Elev 678
--	------------------------	---

RNAV (GPS) RWY 14
CHEROKEE COUNTY (JSO)

Baro-VNAV NA when using Nacogdoches altimeter setting. For uncompensated Baro-VNAV systems, LNAV/VNAV NA below -16°C (4°F) or above 54°C (130°F). When local altimeter setting not received, use Nacogdoches altimeter setting and increase all DA to 1046 feet and increase LPV visibility ½ SM and LNAV/VNAV visibility ¼ SM; increase all MDA 120 feet and LNAV visibility Cat C ¾ SM, Circling visibility Cat C ¼ SM. DME/DME RNP-0.3 NA. VDP NA with Nacogdoches altimeter setting.

MISSED APPROACH:
Climb to 3100 direct
NOPCI and hold.

AWOS-3 119.075	LONGVIEW APP CON* 128.75 379.15	UNICOM 122.7 (CTAF) 0
--------------------------	---	---------------------------------



CATEGORY	A	B	C	D
LPV DA	928-1	250 (300-1)		NA
RNAV/VNAV DA	928-1	250 (300-1)		NA
RNAV MDA	1080-1	402 (500-1)	1080- $\frac{1}{8}$ 402 (500- $\frac{1}{8}$)	NA
CIRCLING	1080-1 402 (500-1)	1140-1 462 (500-1)	1280- $\frac{13}{4}$ 602 (700- $\frac{13}{4}$)	NA