

EDNA, TEXAS

AL-6468 (FAA)

24305

WAAS CH <b>97348</b> <b>W33A</b>	APP CRS <b>327°</b>	Rwy Idg <b>3393</b> TDZE <b>61</b> Apt Elev <b>62</b>
--	------------------------	---

# RNAV (GPS) RWY 33

## JACKSON COUNTY (26R)

RNP APCH - GPS.

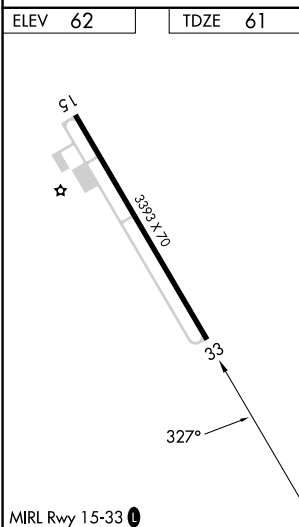
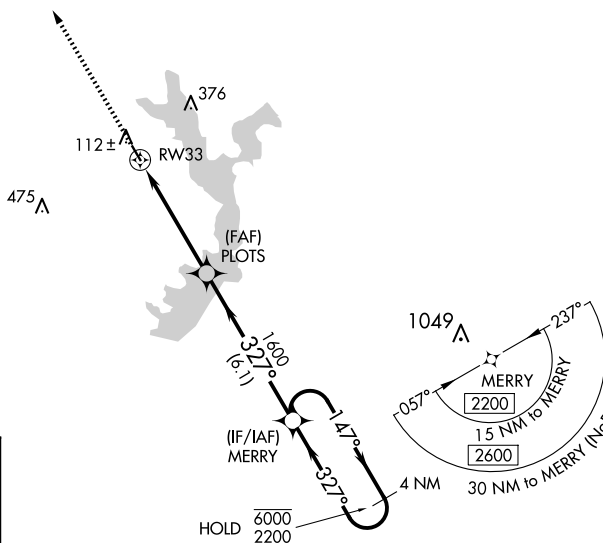
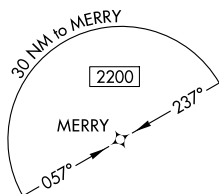
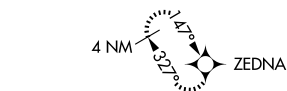
<b>T</b>	Baro-VNAV NA.
<b>A</b> NA	Use VCT altimeter setting, when not received, use PKV altimeter setting.

**MISSED APPROACH:** Climb to 2200 direct ZEDNA and hold.

VCT ASOS  
**119,025**

HOUSTON CENTER  
135.05 353.6

UNICOM  
122.8 (CTAF) **L**



CATEGORY	A	B	C	D
LPV DA	315-¾	254 (300-¾)		NA
LNAV/VNAV DA	365-⅞	304 (400-⅞)		NA
LNAV MDA	560-1	499 (500-1)		NA

EDNA, TEXAS  
Orig 31OCT24

29°00'N-96°35'W

JACKSON COUNTY (26R)  
RNAV (GPS) RWY 33

SC-5, 07 AUG 2025 to 04 SEP 2025