


EDNA, TEXAS

AL-6468 (FAA)

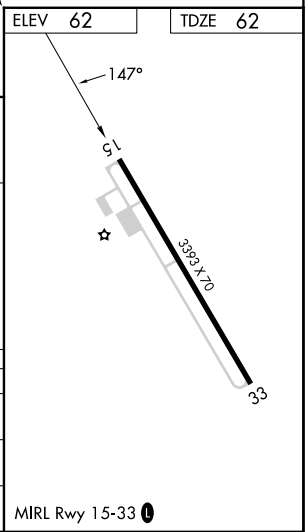
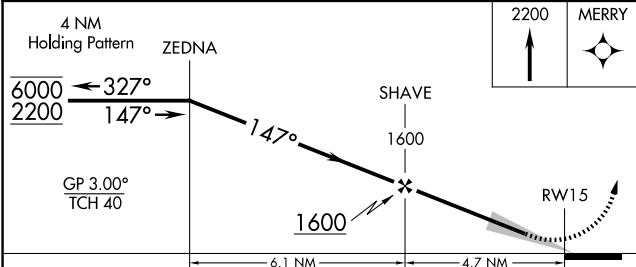
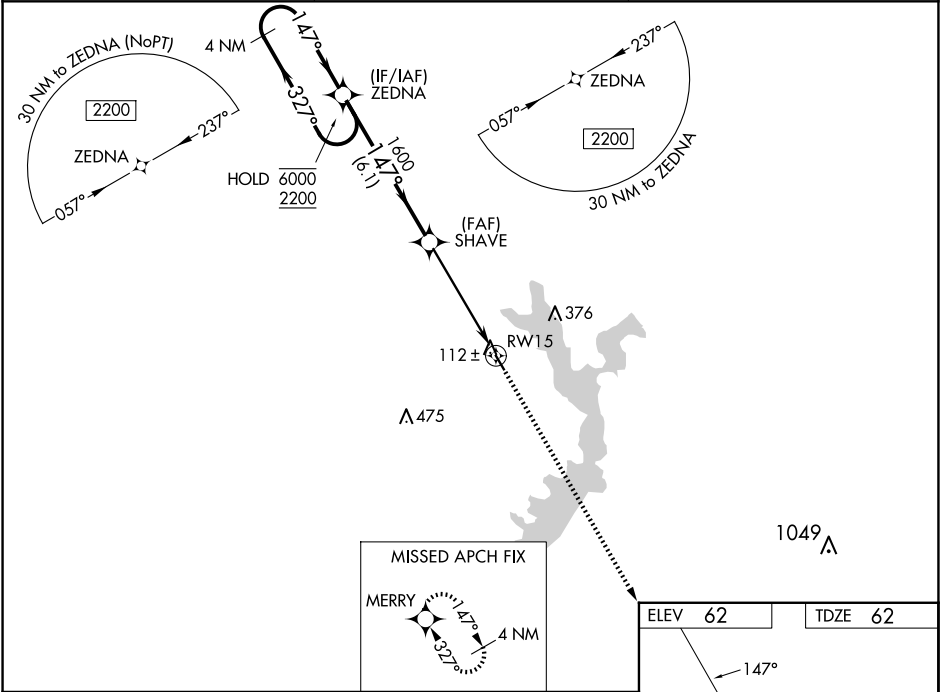
24305

WAAS CH 50148 W15A	APP CRS 147°	Rwy Idg 3393 TDZE 62 Apt Elev 62
--	------------------------	---

RNAV (GPS) RWY 15
JACKSON COUNTY (26R)

RNP APCH - GPS.		MISSED APPROACH: Climb to 2200 direct MERRY and hold.
 NA	Baro-VNAV NA. Use VCT altimeter setting, when not received, use PKV altimeter setting.	

VCT ASOS 119.025	HOUSTON CENTER 135.05 353.6	UNICOM 122.8 (CTAF) 0
----------------------------	---------------------------------------	---------------------------------



CATEGORY	A	B	C	D
LPV DA	366-7/8	304 (400-7/8)	NA	NA
LNNAV/VNAV DA	366-7/8	304 (400-7/8)	NA	NA
LNNAV MDA	600-1	538 (600-1)	NA	NA

EDNA, TEXAS
Orig 31OCT24

29°00'N-96°35'W

JACKSON COUNTY (26R)
RNAV (GPS) RWY 15

SC-5, 07 AUG 2025 to 04 SEP 2025

SC-5, 07 AUG 2025 to 04 SEP 2025