

WAAS CH 93621 W32A	APP CRS 322°	Rwy Idg 4313 TDZE 43 Apt Elev 44
--	------------------------	---

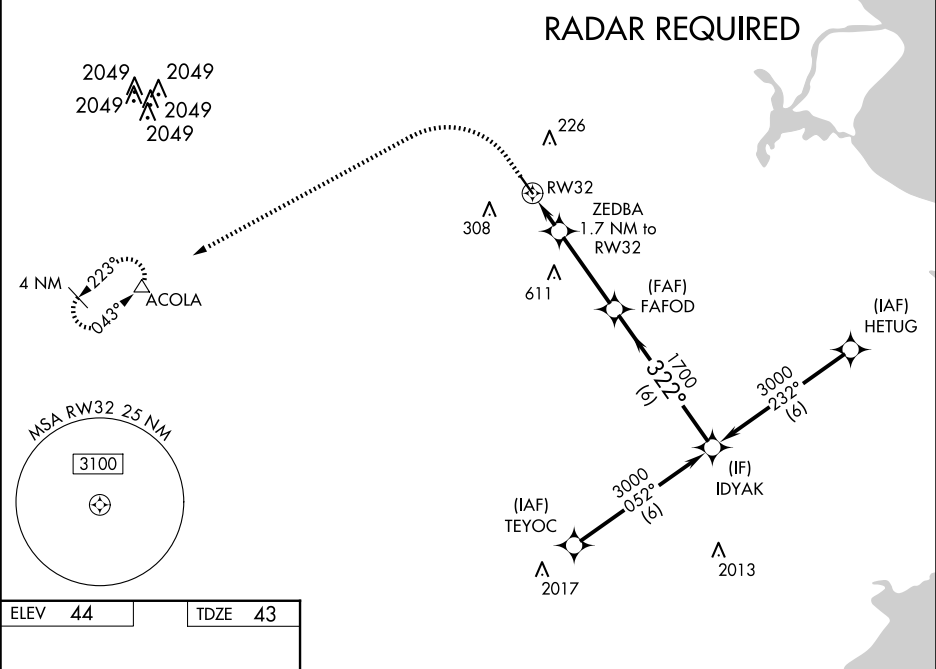
RNAV (GPS) RWY 32

PEARLAND RGNL (L V J)

⚠ Circling to Rwy 14 NA at night. For uncompensated Baro-VNAV systems, LNAV/VNAV NA below -1°C (31°F) or above 54°C (130°F). When local altimeter setting not received, use William P Hobby altimeter setting and increase all DA 18 feet and all MDA 20 feet, increase LNAV/VNAV visibilities all Cats 1/8 mile. VDP and Baro-VNAV NA when using William P Hobby altimeter setting. DME/DME RNP-0.3 NA. Helicopter visibility reduction below 3/4 SM NA.

MISSED APPROACH:
Climb to 500 then climbing left turn to 3000 direct ACOLA and hold.

ASOS 118.525	HOUSTON APP CON 134.45 284.0	CLNC DEL 124.0	UNICOM 122.725 (CTAF) 0
------------------------	--	--------------------------	-----------------------------------



500 3000 ACOLA △		IDYAK 3000			
*LNAV only.		ZEDBA 1.7 NM to RW32 1700			
RW32 1 NM 0.7 NM 3.4 NM 6 NM		620* 1700			
GP 3.00° TCH 40					
CATEGORY	A	B	C	D	
LPV DA	293-7/8	250 (300-7/8)	NA		
LNAV/VNAV DA	310-7/8	267 (300-7/8)	NA		
LNAV MDA	400-1	357 (400-1)	NA		
CIRCLING	500-1 456 (500-1)	660-1 616 (700-1)	NA		