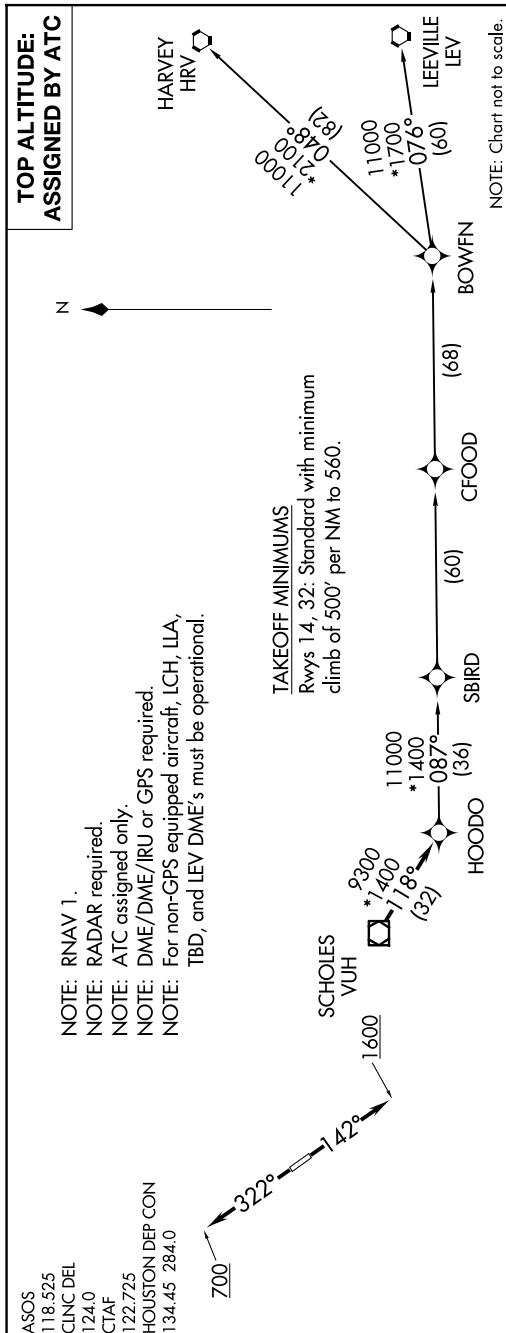


## HOODO SEVEN DEPARTURE (RNAV)



## DEPARTURE ROUTE DESCRIPTION

TAKEOFF RUNWAY 14: Climb on heading 142° to 1600, for RADAR vectors to VUH VOR/DME, thence . . . .  
TAKEOFF RUNWAY 32: Climb on heading 322° to 700, for RADAR vectors to VUH VOR/DME, thence . . . .

..... on track 118° to HOOO, then on (transition). Maintain ATC assigned altitude.  
Expect filed altitude 10 minutes after departure.

BOWFN TRANSITION (HOODO7.BOWFN)  
CFOOD TRANSITION (HOODO7.CFOOD)  
HARVEY TRANSITION (HOODO7.HRV)  
LEEVILLE TRANSITION (HOODO7.LEV)  
SBIRD TRANSITION (HOODO7.SBIRD)

HOODO SEVEN DEPARTURE (RNAV)  
(HOODO7.HOODO) 07OCT21