

APP CRS
021°

Rwy Ldg
TDZE
Apt Elev
**3215
9
11**

RNAV (GPS) RWY 2

NEW SMYRNA BEACH MUNI (JACK BOLT FLD) (EVB)

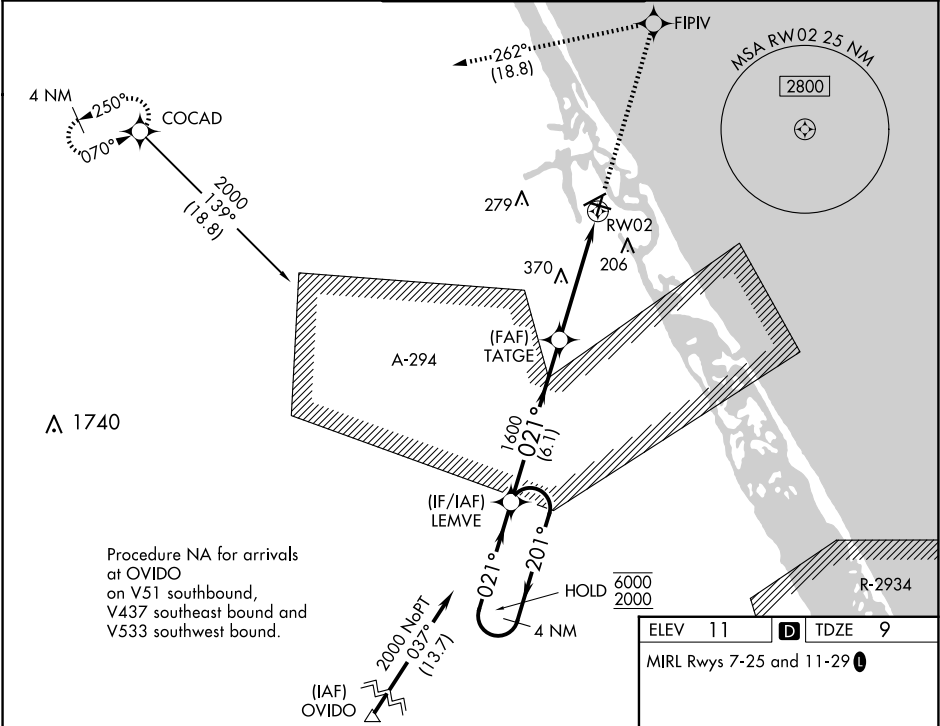
RNP APCH-GPS.

⚠

Rwy 2 helicopter visibility reduction below ¾ SM NA. VDP NA when using Daytona Beach altimeter setting. Straight-in Rwy 2 NA at night. Circling Rwy 7, 11, 25 NA at night.
When local altimeter setting not received, use Daytona Beach altimeter setting and increase all MDA 40 feet.

MISSED APPROACH: Climb to 2000 direct FIPV and left turn on track 262° to COCAD and hold.

ATIS 124.625	DAYTONA APP CON 125.35 322.3	NEW SMYRNA BEACH TOWER★ 119.675 (CTAF) 0	GND CON 121.325	UNICOM 122.95
------------------------	--	--	---------------------------	-------------------------



4 NM Holding Pattern

2000
↑

FIPV

tr 262°

COCAD

6000
2000

← 201°
021° →

LEMVE

021°

TATGE

1600

3.04°

TCH 40

2 NM to RW02

RW02

6.1 NM

2.8 NM

2 NM

CATEGORY	A	B	C	D
LNAV MDA	700-1	691 (700-1)	700-2	691 (700-2)
CIRCLING	700-1¼	689 (700-1¼)	700-2 689 (700-2)	700-2¼ 689 (700-2¼)

5000 X 75

100

4000

4319 X 75

29

02

11

2

021°

TWR