

APP CRS  
239°

Rwy Idg  
TDZE  
688

Apt Elev  
688

RNAV (GPS) RWY 24

FRANKLIN COUNTY RGNL (N68)

RNP APCH - GPS.

▼

NA

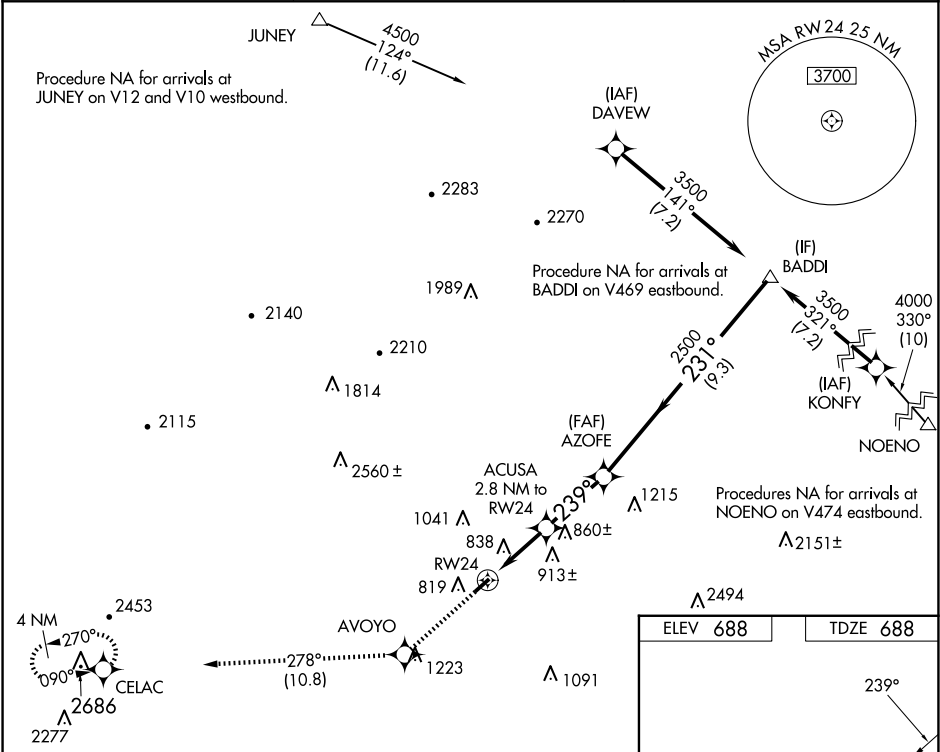
Rwy 24 helicopter visibility reduction below 1 SM NA. When local altimeter setting not received, use Hagerstown, MD altimeter setting and increase all MDAs 40 feet, increase LNAV Cat C visibility ¼ SM. Straight-in and Circling Rwy 24 NA at night.

MISSED APPROACH: Climb to 4000 direct AVOYO and on track 278° to CELAC and hold, continue climb-in-hold to 4000.

AWOS-3  
120.725

HARRISBURG APP CON  
124.1 273.525

CTAF  
122.9



4000

AVOYO

tr

CELAC

278°

Visual Segment - Obstacles.

RW24

ACUSA 2.8 NM to RW24

AZOFE

BADDI

1580

239°

2500

231°

3500

2.8 NM

2.8 NM

9.3 NM

| CATEGORY | A      | B           | C                       | D  |
|----------|--------|-------------|-------------------------|----|
| LNAV MDA | 1100-1 | 412 (500-1) | 1100-1½<br>412 (500-1½) | NA |
| CIRCLING | 1220-1 | 532 (600-1) | 1360-2<br>672 (700-2)   | NA |

MIRL Rwy 6-24