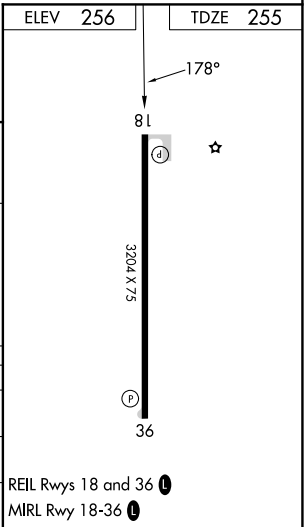
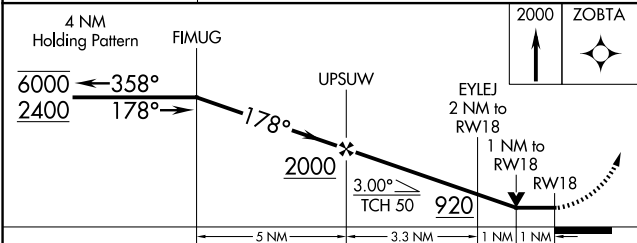
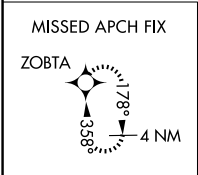
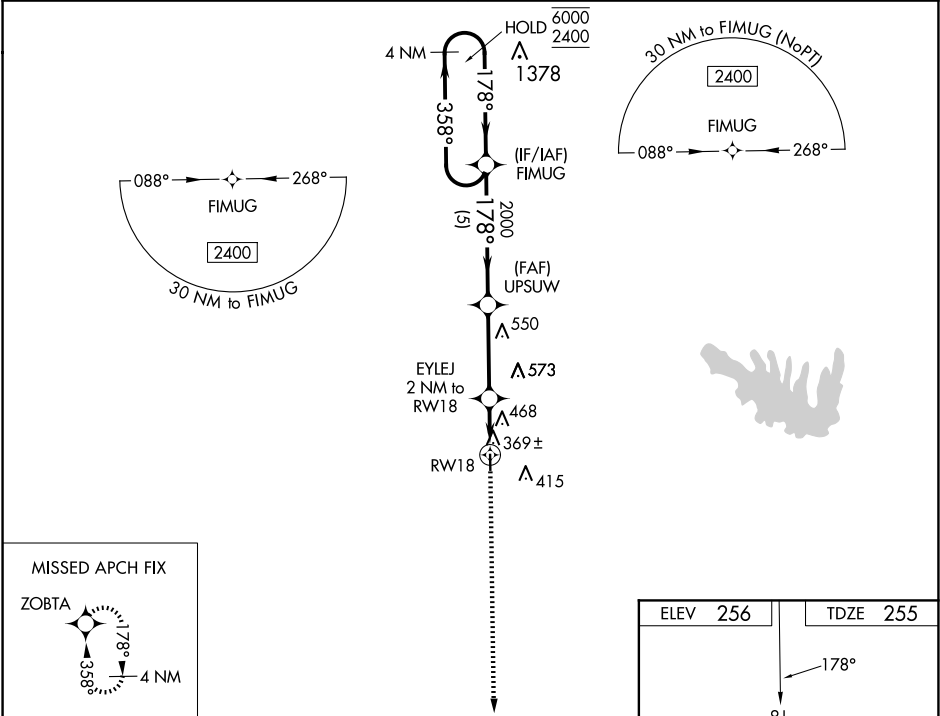


WAAS CH <b>86728</b> <b>W18A</b>	APP CRS <b>178°</b>	Rwy Idg <b>3204</b> TDZE <b>255</b> Apt Elev <b>256</b>
--	------------------------	---

RNAV (GPS) RWY 18  
JONESBORO (F88)

RNP APCH - GPS. ▼ Rwy 18 helicopter visibility reduction below ¾ SM NA. Obtain local altimeter setting on CTAF; when not received, use Ruston altimeter setting and increase all MDAs 60 feet, and LNAV visibility Cat C ⅓ SM, LP visibility Cat C ¼ SM, and Circling visibility Cat C ¼ SM. VDP NA when using Ruston altimeter setting.	MISSED APPROACH: Climb to 2000 direct ZOBTA and hold.
---	--

MONROE APP CON ★ <b>126.9 307.9</b>	CTAF <b>122.9 0</b>
--	------------------------



CATEGORY	A	B	C	D
LP MDA	620-1	365 (400-1)		NA
LNAV MDA	720-1	465 (500-1)	720-1⅓ 465 (500-1⅓)	NA
CIRCLING	780-1	524 (600-1)	880-1⅓ 624 (700-1⅓)	NA