

MILFORD, IOWA

AL-6455 (FAA)

23278

VOR/DME SPW 115.15 Chan 98 (Y)	APP CRS 005°	Rwy Idg TDZE Apt Elev 1439	N/A N/A
--	------------------------	---	--------------------------

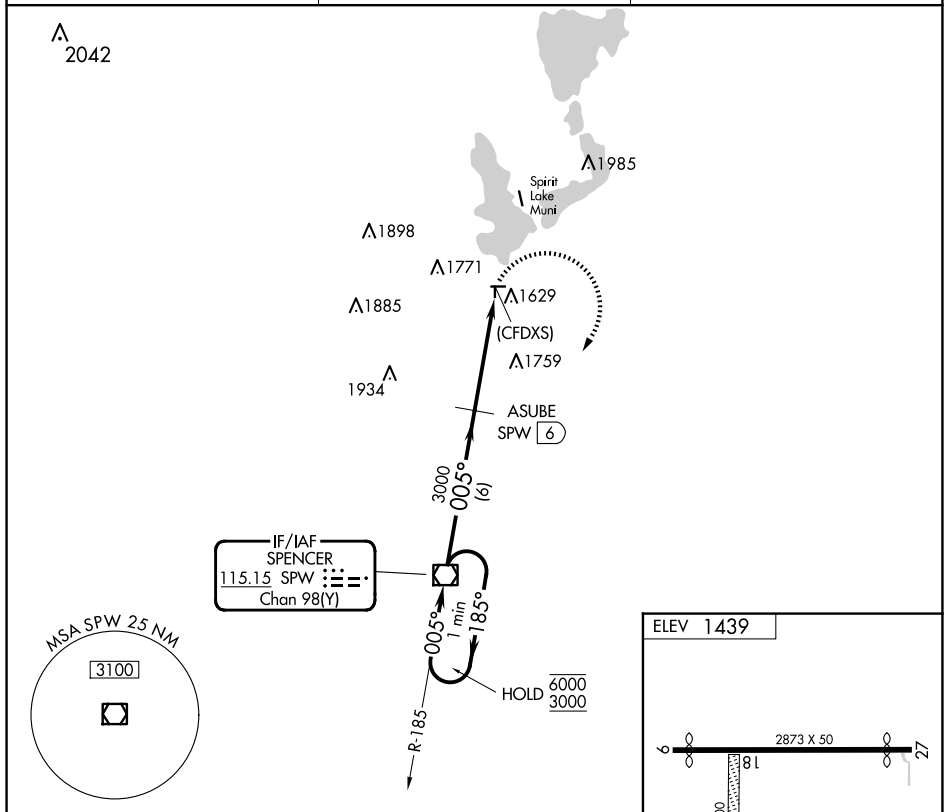
VOR-A
FULLER(4D8)

DME required. RADAR required for procedure entry.

T	Circling NA to Rwy 18 and 36. Procedure NA at night.
A NA	Use Spencer altimeter setting, when not received, use Estherville altimeter setting and increase all MDA 40 feet.

MISSED APPROACH: Climbing right turn to 3000 direct SPW VOR/DME and hold.

SPW ASOS 126.625	MINNEAPOLIS CENTER 127.75 257.7	CTAF 122.9
----------------------------	---	----------------------



<div>One Minute Holding Pattern</div> <div><div>SPW VOR/DME</div><div>ASUBE SPW 6</div></div> <div><div>3000</div><div>SPW</div></div> <div><div>6000</div><div>3000</div><div>185°</div><div>005°</div><div>005°</div><div>3000</div><div>6 NM</div><div>4.4 NM</div></div>					<div>2200 X 10</div> <div>0.3% UP</div> <div>36</div> <div>005°</div> <div>URL Rwy's 9-27 and 18-36</div>	
CATEGORY	A		B		C	D
CIRCLING	2100-1 661 (700-1)		NA		FAF to MAP 4.4 NM	
Knots	60	90	120	150	180	
Min:Sec	4:24	2:56	2:12	1:46	1:28	

MILFORD, IOWA
Amdt 1 03JAN19

43°20'N-95°10'W

FULLER(4D8)
VOR-A

NC-3, 07 AUG 2025 to 04 SEP 2025