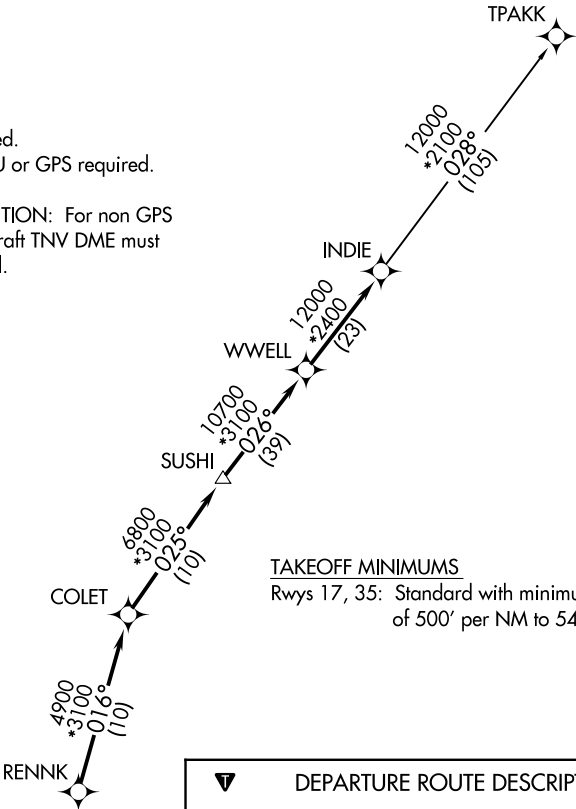


ASOS  
119.925  
CLNC DEL  
125.2  
CTAF  
123.0  
HOUSTON DEP CON  
134.45 284.0

TOP ALTITUDE:  
ASSIGNED BY ATC

- NOTE: RADAR required.  
NOTE: DME/DME/IRU or GPS required.  
NOTE: RNAV 1.  
NOTE: TPAKK TRANSITION: For non GPS equipped aircraft TNV DME must be operational.



DEPARTURE ROUTE DESCRIPTION

**TAKEOFF RUNWAY 17:** Climb on heading 175° to 540 for RADAR vectors to RENNK, thence . . . .  
**TAKEOFF RUNWAY 35:** Climb on heading 355° to 540 for RADAR vectors to RENNK, thence . . . .  
. . . . on track 016° to COLET, then on track 025° to SUSHI, then on track 026° to WWELL, then on track 026° to INDIE, then on (transition).  
Maintain ATC assigned altitude. Expect filed altitude 10 minutes after departure.

TPAKK TRANSITION (INDIE8.TPAKK)

NOTE: Chart not to scale.

SC-5, 07 AUG 2025 to 04 SEP 2025

SC-5, 07 AUG 2025 to 04 SEP 2025