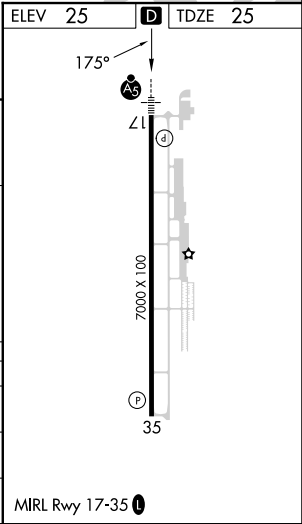
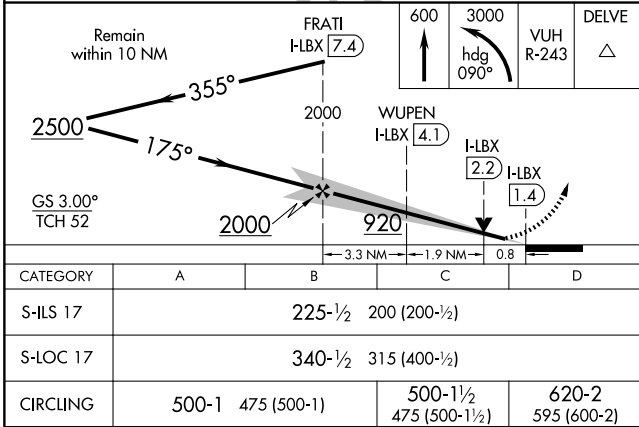
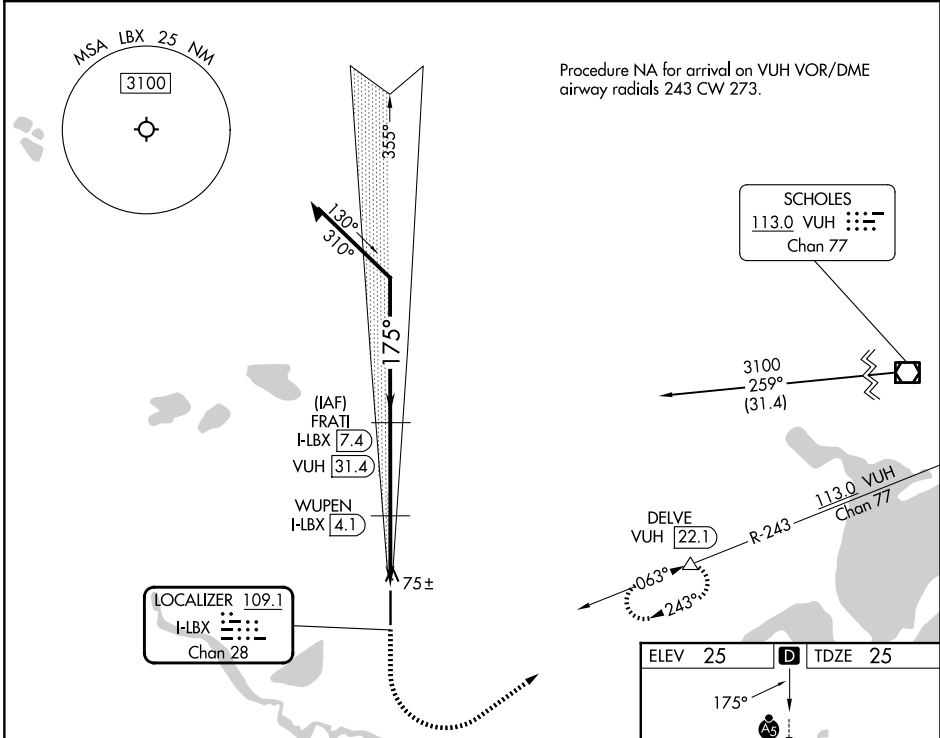


SC-5, 07 AUG 2025 to 04 SEP 2025

LOC/DME I-LBX <b>109.1</b> Chan <b>28</b>	APP CRS <b>175°</b>	Rwy Ldg TDZE <b>25</b> Apt Elev <b>25</b>	<b>7000</b>
---	------------------------	---	-------------

ILS or LOC RWY 17  
TEXAS GULF COAST RGNL (LBX)

DME required. <div><div></div><div>NA</div></div> For inop ALS, increase S-LOC 17 Cat C/D visibility to ½ SM. Circling NA east of Rwy 17-35.		MALSR <div><div></div><div></div></div>	MISSED APPROACH: Climb to 600 then climbing left turn to 3000 on heading 090° and VUH VOR/DME R-243 to DELVE/VUH 22.1 DME and hold, continue climb-in-hold to 3000.
ASOS <b>119.925</b>	HOUSTON APP CON <b>134.45 284.0</b>	CLNC DEL <b>125.2</b>	UNICOM <b>123.0</b> (CTAF) <b>0</b>



SC-5, 07 AUG 2025 to 04 SEP 2025