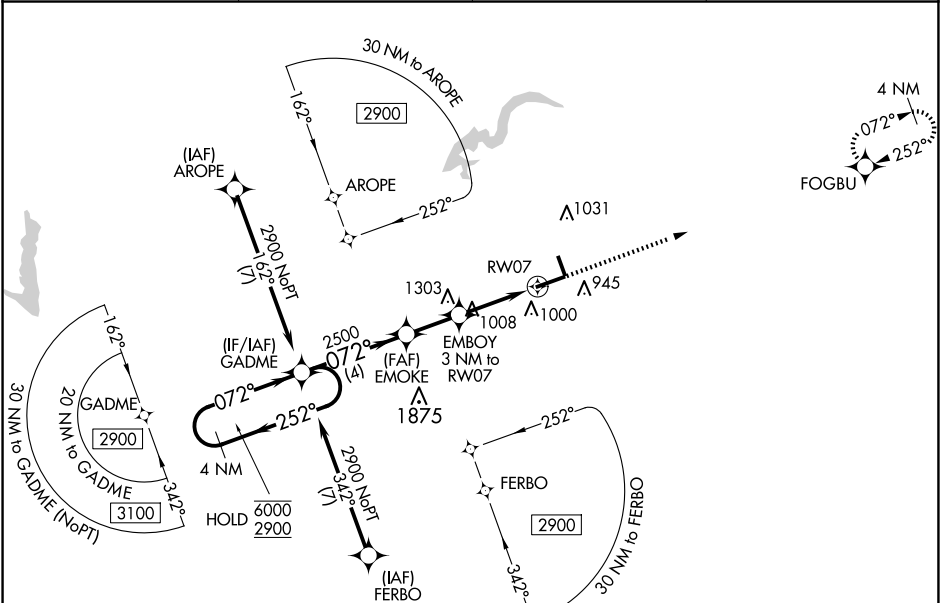


WAAS CH <b>69646</b> <b>W07A</b>	APP CRS <b>072°</b>	Rwy Idg TDZE Apt Elev	<b>6005</b> <b>862</b> <b>862</b>
--	------------------------	-----------------------------	---

RNAV (GPS) RWY 7

INDIANAPOLIS RGNL (MQJ)

RNP APCH - GPS.		MISSED APPROACH: Climb to 2700 direct FOGBU and hold.	
For uncompensated Baro-VNAV systems, LNAV/VNAV NA below -16°C or above 54°C. Rwy 7 helicopter visibility reduction below ¾ SM NA. Baro-VNAV and VDP NA when using IND altimeter setting. When local altimeter setting not received, use IND altimeter setting and increase LPV DA to 1271 feet and all visibilities ½ SM; increase LNAV/VNAV DA to 1194 feet and all visibilities ½ SM; increase all MDAs 60 feet and LNAV visibility Cat C and D ¼ SM.			
AWOS-3PT <b>124.175</b>	INDIANAPOLIS APP CON <b>127.15 317.8</b>	CINC DEL <b>119.25</b>	UNICOM <b>122.975</b> (CTAF) <b>0</b>



		ELEV 862		TDZE 862	
4 NM Holding Pattern 6000 ← 252° 2900 → 072° GP 3.00° TCH 40		GADME 2500 EMOKE 2500 EMBOY 3 NM to RW07 1.1 NM to RW07 RW07 1.1 NM		2700 FOGBU	
		4 NM 2 NM 1.9 NM 1.1 NM			
CATEGORY	A	B	C	D	
LPV DA	1216-1		354 (400-1)		
LNAV/VNAV DA	1139-7/8		277 (300-7/8)		
LNAV MDA	1260-1	398 (400-1)	1260-1 1/8	398 (400-1 1/8)	