

(MAREO5.MAREO) 23334
MAREO FIVE DEPARTURE

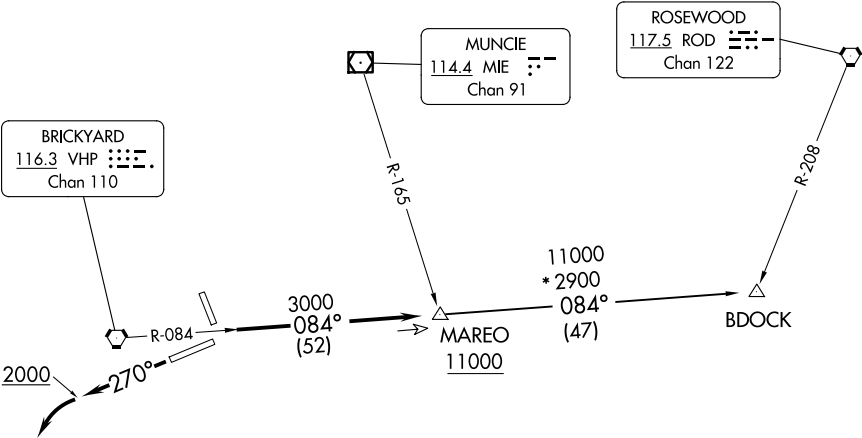
AL-6452 (FAA)

INDIANAPOLIS RGNL (MQJ)
INDIANAPOLIS, INDIANA

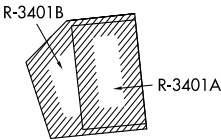
AWOS-3PT
124.175
CLNC DEL
119.25
INDIANAPOLIS DEP CON
127.15 317.8

TAKEOFF MINIMUMS
Rwys 7, 16, 25: Standard.
Rwy 34: 300-1 or standard with minimum
climb of 347' per NM to 1100.

TOP ALTITUDE:
ASSIGNED BY ATC



- NOTE: RADAR required.
NOTE: Select appropriate localizer/DME frequency/channel
prior to departure.
NOTE: Turbojets accelerate to 250K until reaching 10000,
if unable advise ATC.
NOTE: Assigned to aircraft with a requested altitude of 11000 or above.



NOTE: Chart not to scale.

DEPARTURE ROUTE DESCRIPTION
TAKEOFF RWY 25: Climb heading 270° to 2000 before turning left. Then on assigned
heading to assigned altitude. Thence....

DEPARTING ALL OTHER AUTHORIZED RUNWAYS: Climb on assigned heading to
assigned altitude. Thence....

....expect RADAR vectors to join VHP R-084 to MAREO INT then via transition or
assigned route. Expect clearance to requested altitude ten minutes after departure.

BDOCK TRANSITION (MAREO5.BDOCK): From over MAREO INT via VHP R-084
to BDOCK INT.

MAREO FIVE DEPARTURE
(MAREO5.MAREO) 01FEB18

INDIANAPOLIS, INDIANA
INDIANAPOLIS RGNL (MQJ)