

AL-6449 (FAA)

MARCO ISLAND EXEC(MKY)  
MARCO ISLAND, FLORIDA

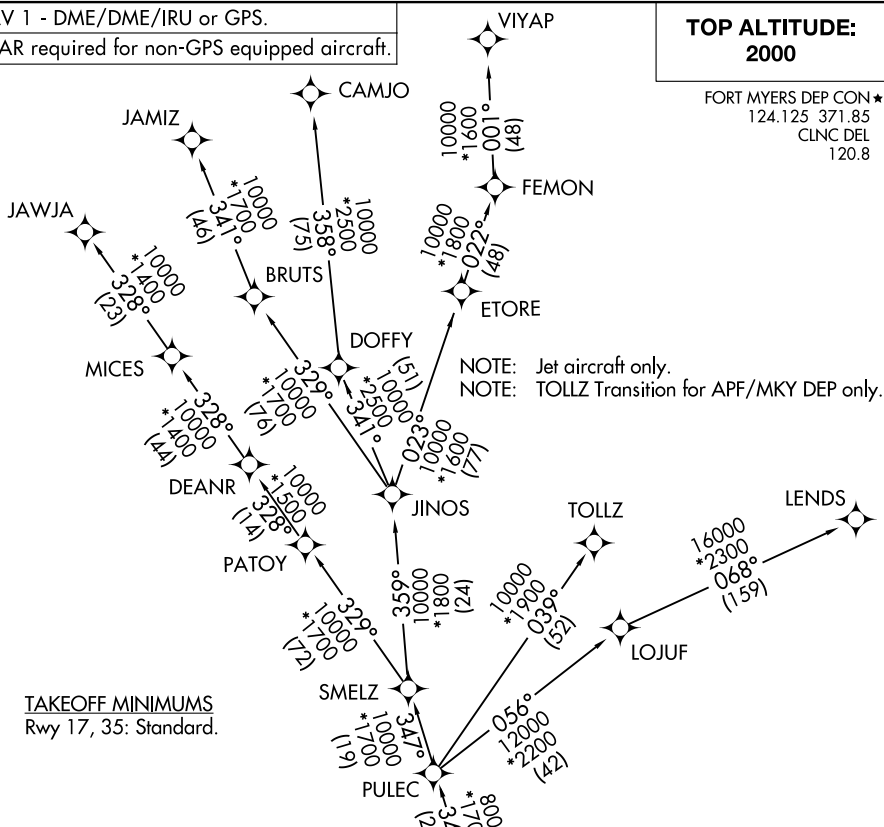
## CSHEL SEVEN DEPARTURE (RNAV)

RNAV 1 - DME/DME/IRU or GPS.

RADAR required for non-GPS equipped aircraft.

**TOP ALTITUDE:**  
2000

FORT MYERS DEP CON★  
124.125 371.85  
CLNC DEL  
120.8



## DEPARTURE ROUTE DESCRIPTION

TAKEOFF RUNWAY 17: Climb on assigned heading for RADAR vectors to CSHEL, thence...

**TAKEOFF RUNWAY 35:** Climb on heading 005° to 700, for RADAR vectors to CSHEL, thence.

...on assigned transition. Maintain 2000.  
Expect clearance to filed altitude within 10  
minutes after departure.

CAMJO TRANSITION (CSHEL7.CAMJO)

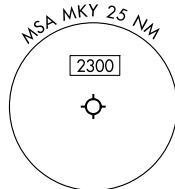
JAMIZ TRANSITION (CSHEL7.JAMIZ)

JAWJA TRANSITION (CSHEL7.JAWJA)

LEND5 TRANSITION (CSHEL7.LEND5)

TOLLZ TRANSITION (CSHEL7.TOLLZ)

VIYAP TRANSITION (CSHEL7.VIYAP)



NOTE: Chart not to scale.

CSHEL SEVEN DEPARTURE (RNAV)

(CSHEL7.CSHEL) 31OCT24

MARCO ISLAND, FLORIDA

MARCO ISLAND EXEC(MKY)

SE-3, 07 AUG 2025 to 04 SEP 2025