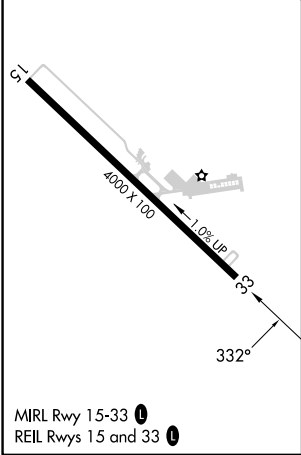
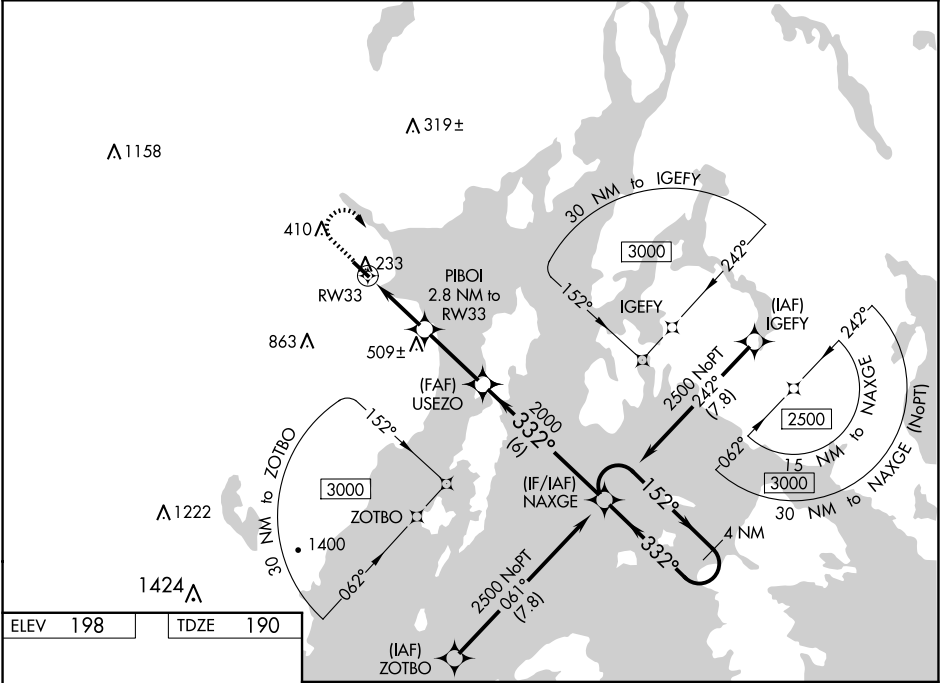


WAAS CH 90336 W33A	APP CRS 332°	Rwy Idg TDZE Apt Elev	4000 190 198
--	------------------------	-----------------------------	---

RNAV (GPS) RWY 33
BELFAST MUNI (BST)

RNP APCH	Baro-VNAV NA when using Bangor Intl altimeter setting. For uncompensated Baro-VNAV systems, LNAV/VNAV NA below -20°C (-4°F) or above 54°C (130°F). Rwy 33 helicopter visibility reduction below ¼ SM NA. When local altimeter setting not received, use Bangor Intl altimeter setting and increase all DA/MDA 60 feet; increase LPV Cats A/B, LNAV/VNAV all Cats and Circling Cat C visibility ¼ SM, increase LPV and LNAV Cat C visibility ½ SM.	MISSED APPROACH: Climb to 660 then climbing right turn to 2500 direct NAXGE and hold.
----------	---	--

AWOS-AV 122.975	BANGOR APP CON 118.925 239.3	UNICOM 122.975 (CTAF) 0
---------------------------	--	-----------------------------------



660		2500		NAXGE		4 NM Holding Pattern	
* LNAV only		PIBOI 2.8 NM to RW33		USEZO 2000		152° ← 332° 2500	
		1080*		2000		GP 3.00° TCH 40	
2.8 NM		2.9 NM		6 NM			
CATEGORY		A		B		C	
LPV DA		440-1		250 (300-1)		NA	
LNAV/VNAV DA		512-1¼		322 (400-1¼)		NA	
LNAV MDA		580-1		390 (400-1)		580-1½ 390 (400-1½)	
CIRCLING		700-1 502 (600-1)		800-1 602 (700-1)		1040-2½ 842 (900-2½)	
						NA	