

WAAS CH <b>99536</b> <b>W15A</b>	APP CRS <b>151°</b>	Rwy Idg TDZE <b>198</b> Apt Elev <b>198</b>	<b>4000</b>
--	------------------------	---	-------------

RNAV (GPS) RWY 15

BELFAST MUNI (BST)

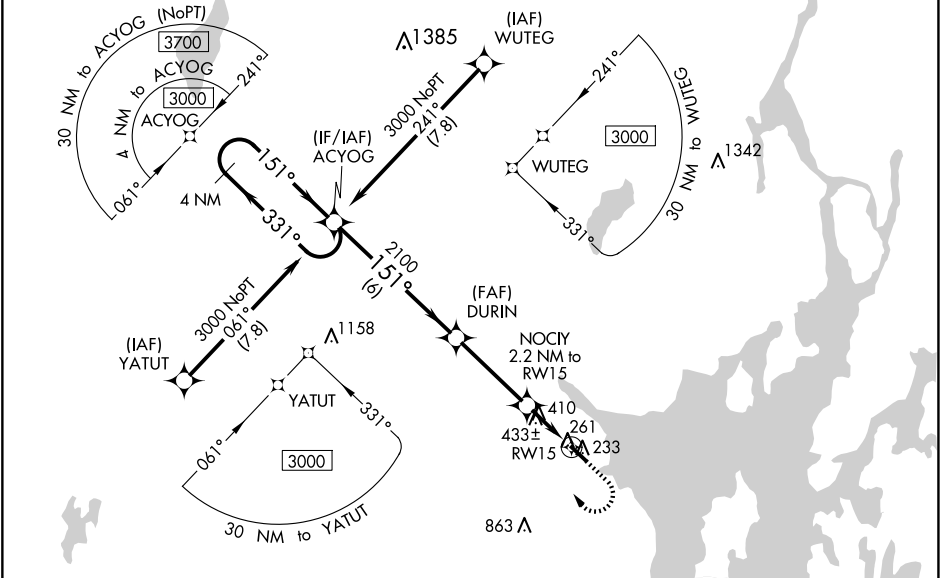
▼

▲ NA

For uncompensated Baro-VNAV systems, LNAV/VNAV NA below -23°C (-9°F) or above 54°C (130°F). DME/DME RNP -0.3 NA. When local altimeter not received, use Bangor Intl altimeter setting and increase all DA/MDA 60 feet. Increase LPV all Cats visibility ½ mile; increase LNAV/VNAV all Cats visibility ¾ mile; increase LNAV and Circling Cat C visibility ¼ mile. Baro-VNAV NA when using Bangor Intl altimeter. Helicopter visibility reduction below ¾ SM NA.

MISSED APPROACH: Climb to 900 then climbing right turn to 3000 direct ACYOG and hold.

AWOS-AV <b>122.975</b>	BANGOR APP CON <b>118.925 239.3</b>	UNICOM <b>122.975 (CTAF) 0</b>
---------------------------	--	-----------------------------------



4 NM Holding Pattern ACYOG

3000 ← 331° 151° →

GP 3.08° TCH 40

DURIN 2100

NOCY 2.2 NM to RW15

RW15

900 3000 ACYOG

\* LNAV only.

CATEGORY	A	B	C	D
LPV DA	487-1	289 (300-1)		NA
LNAV/VNAV DA	748-1 7/8	550 (600-1 7/8)		NA
LNAV MDA	720-1	522 (600-1)	720-1 1/2 522 (600-1 1/2)	NA
CIRCLING	720-1 522 (600-1)	800-1 602 (700-1)	1040-2 1/2 842 (900-2 1/2)	NA

ELEV 198 TDZE 198

151°

4000 X 100

1.0° Up

33

MIRL Rwy 15-33 0  
REIL Rwy 15 and 33 0