

HEREFORD, TEXAS

AL-6446 (FAA)

24361

WAAS CH 61216 W20A	APP CRS 200°	Rwy Idg 6100 TDZE 3786 Apt Elev 3788
--	------------------------	---

RNAV (GPS) RWY 20

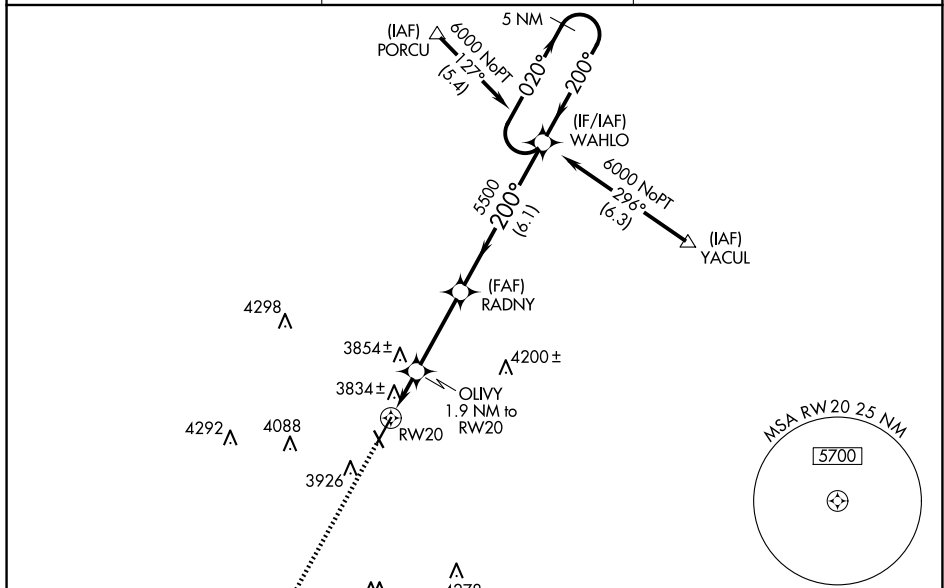
HEREFORD MUNI (HRX)

	RNP APCH - GPS.
--	-----------------

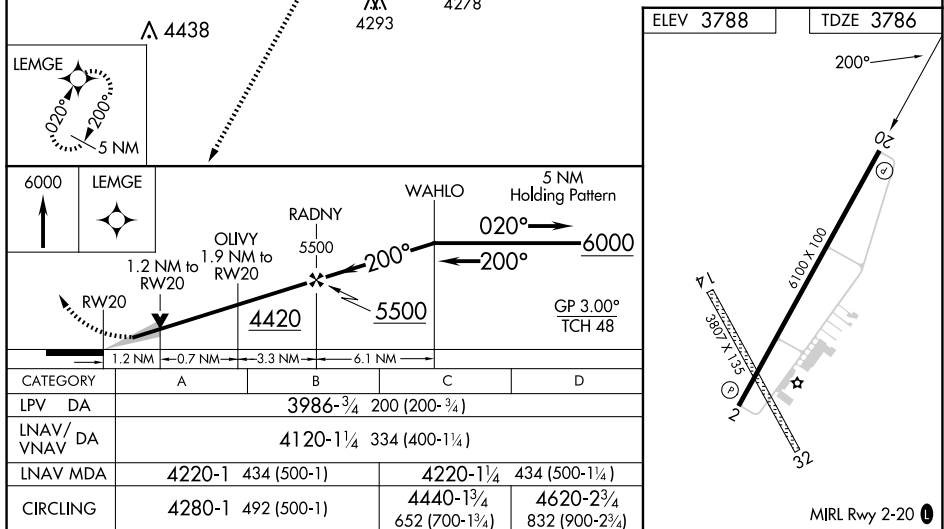
V For uncompensated Baro-VNAV systems, LNAV/VNAV NA below -22°C or above 41°C. When local altimeter setting not received, use AMA altimeter setting: increase LPV DA to 4098 feet and all visibilities ¼ SM; increase LNAV/VNAV DA to 4232 feet and all visibilities ¼ SM; increase all MDAs 120 feet and LNAV visibility Cats C and D ½ SM, increase Circling visibility Cat C ½ SM and Cat D ¼ SM. Circling Baro to Rwys 14 and 32. Baro-VNAV and VDP NA when using AMA altimeter setting.

MISSED APPROACH:
Climb to 6000 direct
LEMGE and hold.

AWOS-3 118.05	AMARILLO APP CON ★ 119.5 307.0	UNICOM 122.8 (CTAF) 0
-------------------------	--	--



SC-2, 07 AUG 2025 to 04 SEP 2025



HEREFORD, TEXAS
Orig-D 26DEC24

34°52'N-102°20'W

HEREFORD MUNI (HRX)

RNAV (GPS) RWY 20

SC-2, 07 AUG 2025 to 04 SEP 2025

SC-2, 07 AUG 2025 to 04 SEP 2025