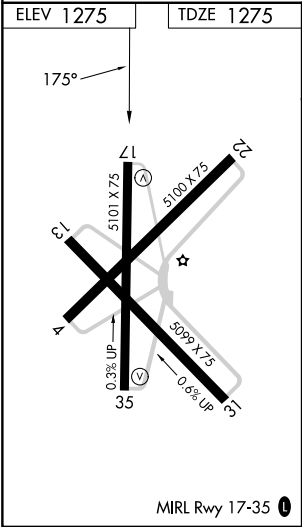
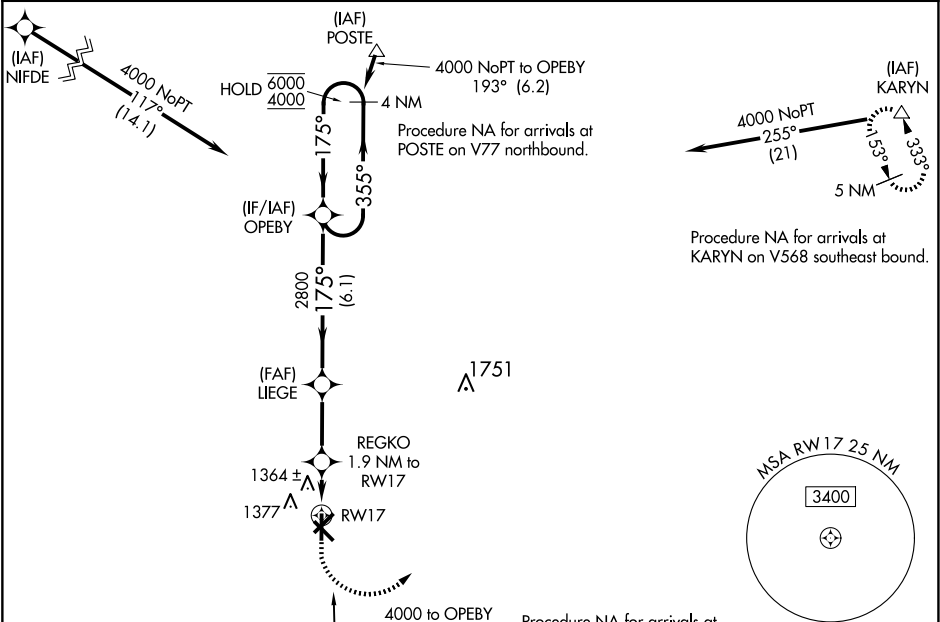


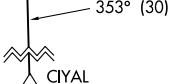

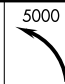

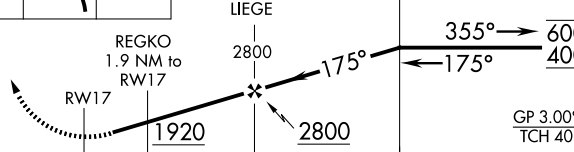

WAAS CH <b>97332</b> <b>W17A</b>	APP CRS <b>175°</b>	Rwy Idg TDZE <b>1275</b> Apt Elev <b>1275</b>	<b>5101</b>
--	------------------------	---	-------------

RNAV (GPS) RWY 17  
OLNEY MUNI (ONY)

RNP APCH - GPS.	MISSED APPROACH: Climb to 1800 then climbing left turn to 5000 direct KARYN and hold.
NA Rwy 17 helicopter visibility reduction below 3/4 SM NA. Baro-VNAV NA. Use Graham altimeter setting.	

RPH AWOS-3P <b>118.025</b>	FORT WORTH CENTER <b>133.5 350.35</b>	UNICOM <b>122.8 (CTAF) 0</b>
-------------------------------	--	---------------------------------



		procedure RNA for arrivals at CIYAL on V16 southwest bound.		
1800 	5000 	KARYN 	VGSI and RNAV glidepath not coincident (VGSI Angle 3.00/TCH 29).	
		4 NM Holding Pattern		
				
CATEGORY	A	B	C	D
LPV DA	1592-7/8 317 (400-7/8)			NA
LNAV/ VNAV	1592-7/8 317 (400-7/8)			NA
LNAV MDA	1700-1	425 (500-1)	1700-1 1/4 425 (500-1 1/4)	NA
 CIRCLING	1760-1	485 (500-1)	1760-1 1/2 485 (500-1 1/2)	NA

SC-2, 07 AUG 2025 to 04 SEP 2025

SC-2, 07 AUG 2025 to 04 SEP 2025