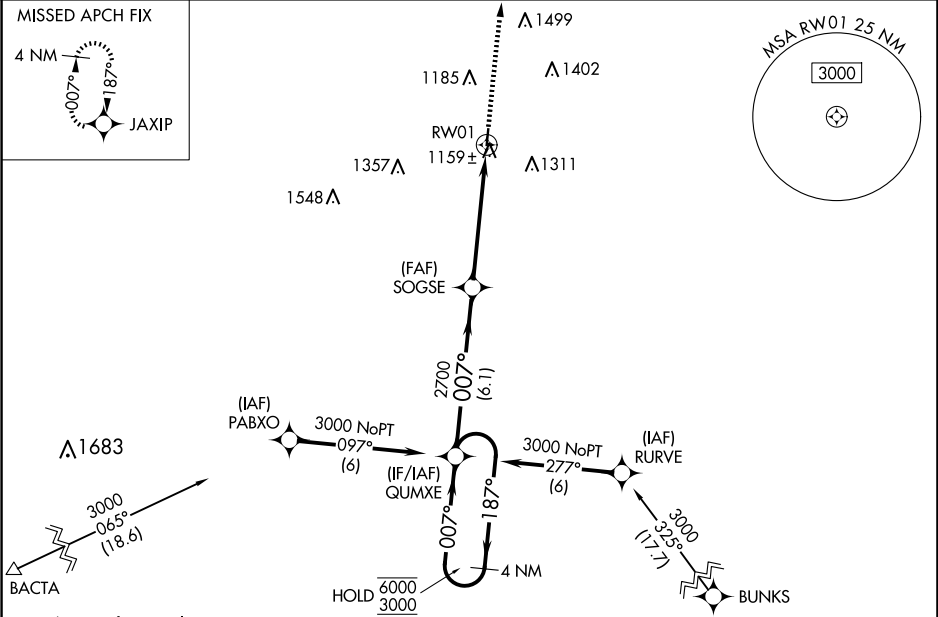


WAAS CH <b>70543</b> <b>W01A</b>	APP CRS <b>007°</b>	Rwy Idg TDZE Apt Elev	<b>3420</b> <b>1023</b> <b>1023</b>
--	------------------------	-----------------------------	---

RNAV (GPS) RWY 1  
CUBA MUNI (UBX)

RNP APCH - GPS.		MISSED APPROACH: Climb to 3000 direct JAXIP and hold.
Procedure NA at night. Rwy 1 helicopter visibility reduction below 1 SM NA. Use Rolla/Vichy altimeter setting; when not received, use Fort Leonard Wood altimeter setting, increase all MDAs 60 feet and increase Cat B Circling visibility ¼ SM.		

VIH ASOS <b>119.025</b>	KANSAS CITY CENTER <b>128.35 284.675</b>	UNICOM <b>122.8 (CTAF) 0</b>
----------------------------	---	---------------------------------



Procedure NA for arrivals at BACTA on V289 southbound.		ELEV 1023 TDZE 1023	
4 NM Holding Pattern		VGSI and descent angles not coincident (VGSI Angle 3.25/TCH 44).	
6000 ← 187° 3000 → 007°		3000 JAXIP	
QUMXE		SOGSE	
007°		3.00° TCH 40	
2700		RWY 1	
6.1 NM		5.2 NM	
CATEGORY	A	B	C D
LP MDA	1480-1	457 (500-1)	NA
LNAV MDA	1480-1	457 (500-1)	NA
CIRCLING	1560-1 537 (600-1)	1780-1 757 (800-1)	NA

