

MEXIA, TEXAS

AL-6438 (FAA)

24025

WAAS CH <b>69228</b> <b>W36A</b>	APP CRS <b>005°</b>	Rwy Idg TDZE Apt Elev	<b>5000</b> <b>541</b> <b>545</b>
--	------------------------	-----------------------------	---

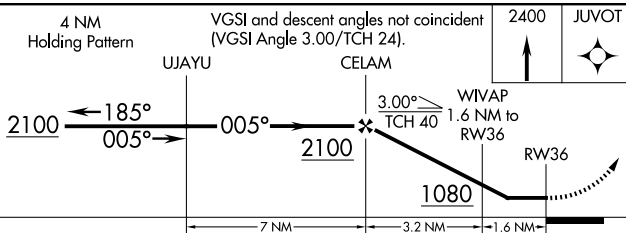
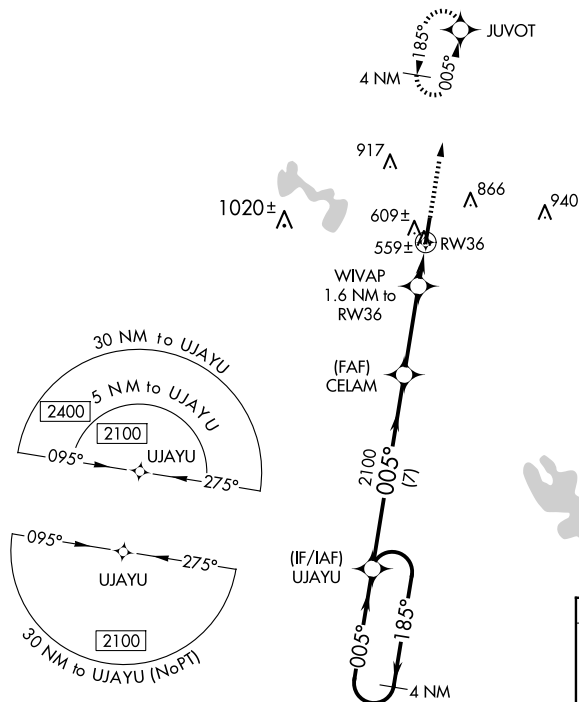
RNAV (GPS) RWY 36  
MEXIA-LIMESTONE COUNTY (LXY)

**NA** DME/DME RNP-0.3 NA. Helicopter visibility reduction below  $\frac{3}{4}$  SM NA. Obtain local altimeter setting on CTAF; when not received, use Waco Rgnl altimeter setting and increase all MDA 100 feet; increase LP Cat C visibility  $\frac{1}{8}$  mile and LNAV and circling Cat C visibility  $\frac{1}{4}$  mile.

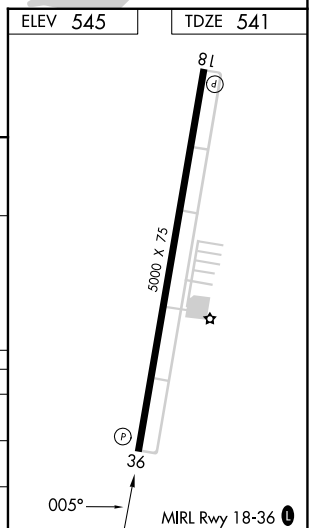
**MISSED APPROACH:**  
Climb to 2400 direct  
JUVOT and hold.

AWOS-3  
127.275

WACO APP CON★  
127.65 352.0

UNICOM  
122.8 (CTAF)

CATEGORY	A	B	C	D
LP MDA	860-1	319 (400-1)		NA
LNAV MDA	880-1	339 (400-1)		NA
CIRCLING	960-1 415 (500-1)	1180-1 635 (700-1)	1220-2 675 (700-2)	NA



MEXIA, TEXAS  
Orig-C 04NOV21

31°38'N-96°31'W

MEXIA-LIMESTONE COUNTY (LXY)  
RNAV (GPS) RWY 36

SC-5, 07 AUG 2025 to 04 SEP 2025