

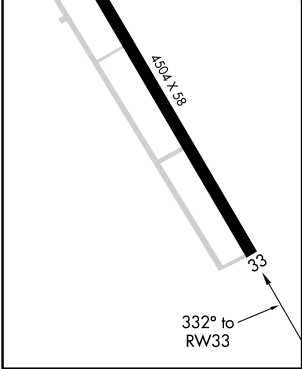
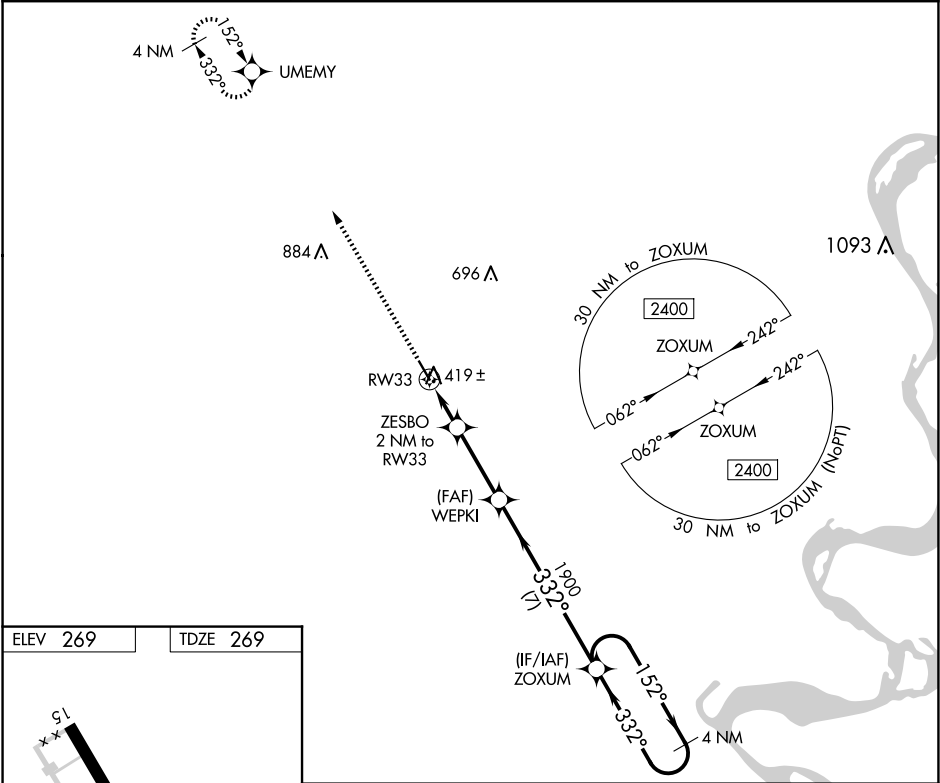
|         |          |      |
|---------|----------|------|
| APP CRS | Rwy Idg  | 4504 |
| 332°    | TDZE     | 269  |
|         | Apt Elev | 269  |

RNAV (GPS) RWY 33

GIDEON MEML (M85)

|   |  |
|---|--|
| <div><div>NA</div><div>DME/DME RNP-0.3 NA. Procedure NA at night. Helicopter visibility reduction below 1 SM NA. Obtain Arkansas Intl altimeter setting on CTAF (122.7), when not received, use Poplar Bluff altimeter setting and increase all MDA 20 feet and Circling Cat C visibility ¼ mile.</div></div> | <div>MISSED APPROACH: Climb to 2400 direct UMEMY and hold.</div> |
|---|--|

|                   |                                 |               |
|-------------------|---------------------------------|---------------|
| BYH CTAF<br>122.7 | MEMPHIS CENTER<br>133.65 292.15 | CTAF<br>122.9 |
|-------------------|---------------------------------|---------------|



2400

↑

UMEMY

✦

WEPKI

332°

1900

ZOXUM

4 NM Holding Pattern

152°

332°

2400

ZESBO

2 NM to RW33

3.00°

TCH 40

RW33

940

2 NM

3 NM

7 NM

| CATEGORY | A     | B           | C  | D  |
|----------|-------|-------------|--|----|
| LNAV MDA | 740-1 | 471 (500-1) | 740-1 <sup>13</sup> / <sub>8</sub><br>471 (500-1 <sup>3</sup> / <sub>8</sub> ) | NA |
| CIRCLING | 860-1 | 591 (600-1) | 900-1 <sup>3</sup> / <sub>4</sub><br>631 (700-1 <sup>3</sup> / <sub>4</sub> )  | NA |