

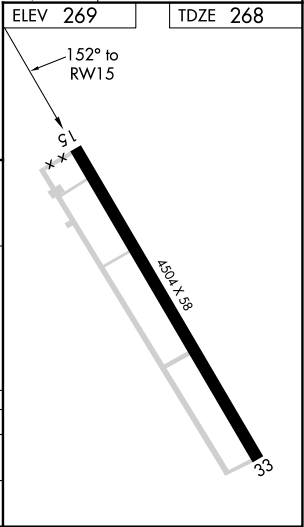
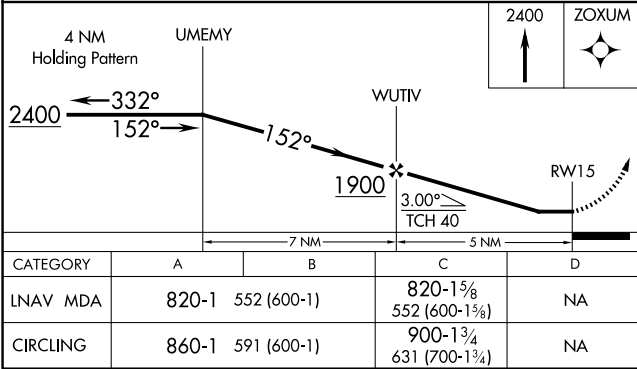
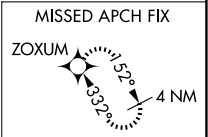
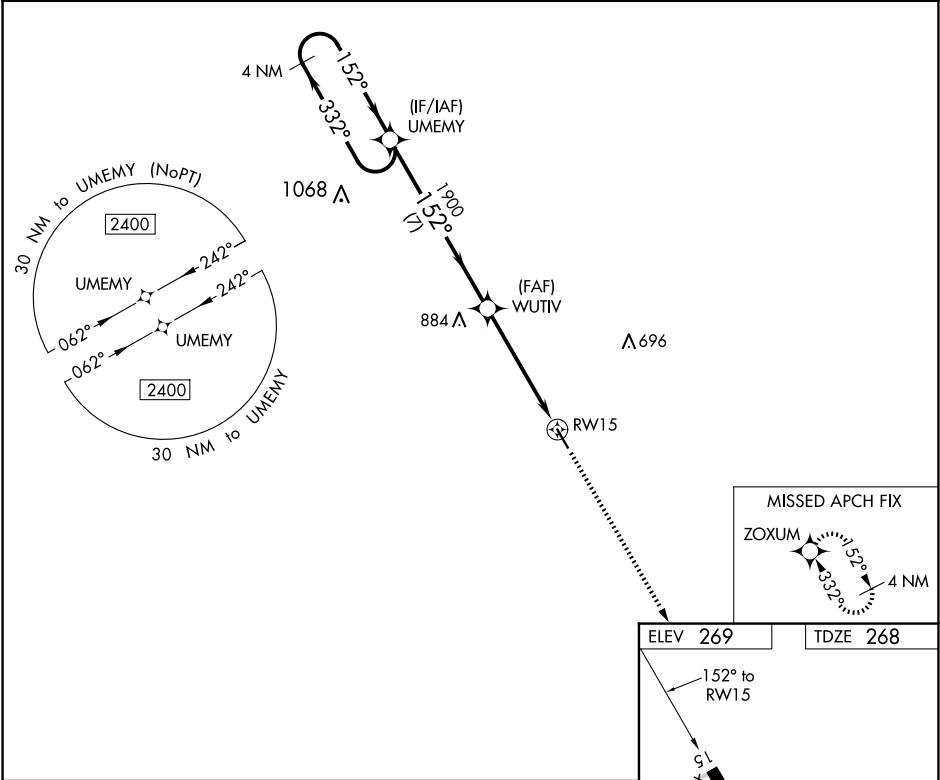
APP CRS	Rwy Idg	4504
152°	TDZE	268
	Apt Elev	269

RNAV (GPS) RWY 15

GIDEON MEML (M85)

<div><div>▼</div><div>▲NA</div></div> <div>DME/DME RNP-0.3 NA. Procedure NA at night. Helicopter visibility reduction below 1 SM NA. Obtain Arkansas Intl altimeter setting on CTAF (122.7), when not received, use Poplar Bluff Muni altimeter setting and increase all MDA 20 feet and Circling Cat C visibility 1⁄8 mile.</div>	MISSED APPROACH: Climb to 2400 direct ZOXYM and hold.
--	---

BYH CTAF 122.7	MEMPHIS CENTER 133.65 292.15	CTAF 122.9
-------------------	---------------------------------	---------------



NC-3, 07 AUG 2025 to 04 SEP 2025

NC-3, 07 AUG 2025 to 04 SEP 2025