

APP CRS
286°

Rwy Idg
TDZE
Apt Elev

4001
683
683

RNAV (GPS) RWY 28

HENRY COUNTY (7W5)

RNP APCH.

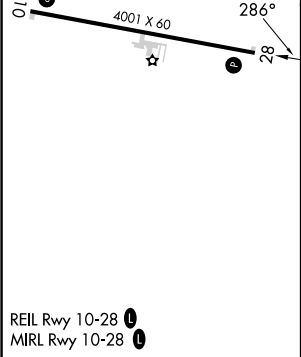
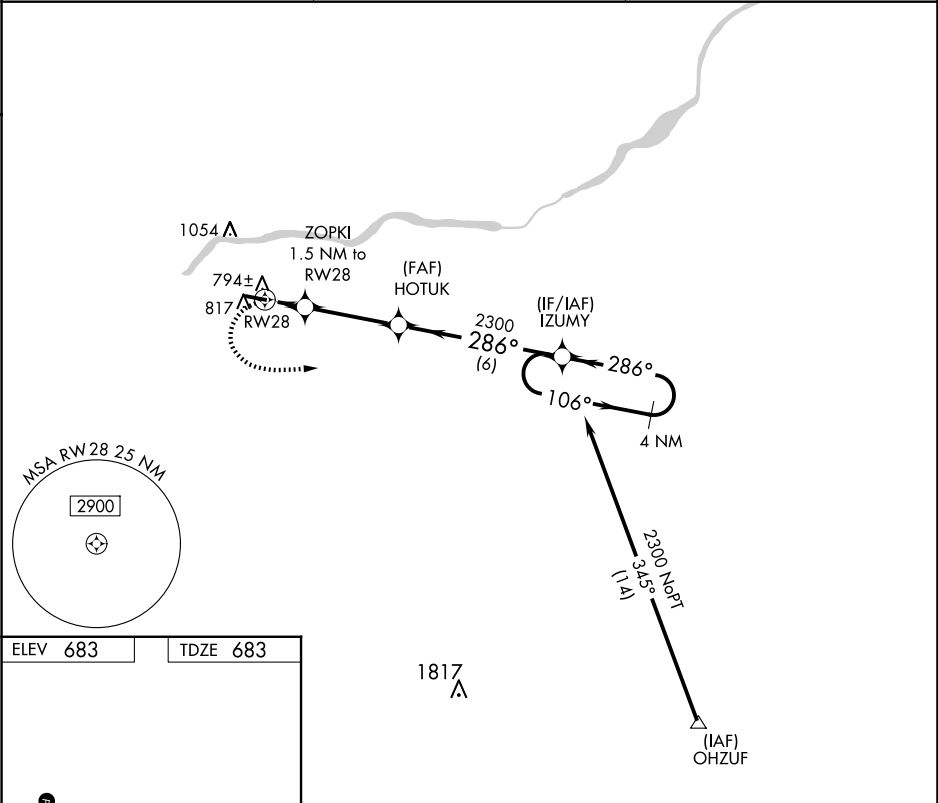
▼

▲ NA

Rwy 28 helicopter visibility reduction below ¾ SM NA.
Circling Rwy 10 NA at night. Use Toledo Express altimeter setting. When not received, procedure NA.

MISSED APPROACH: Climbing left turn to 2300 direct IZUMY and hold.

TOL ASOS 118.75 290.225	TOLEDO APP CON 134.35 307.0	UNICOM 123.0 (CTAF) 0
----------------------------	--------------------------------	--------------------------



2300	IZUMY	VGSI and descent angles not coincident (VGSI Angle 3.00/TCH 25).		4 NM Holding Pattern	
CATEGORY	A		B	C	D
LNAV MDA	1100-1 417 (500-1)		1100-1½ 417 (500-1½)		NA
CIRCLING	1220-1 537 (600-1)		1400-2 717 (800-2)		NA