

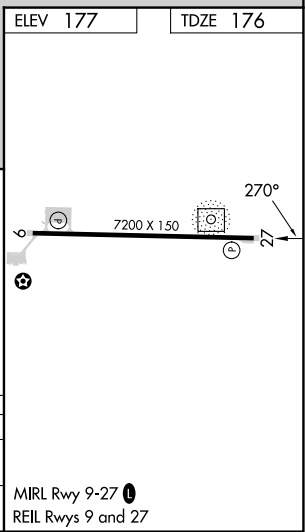
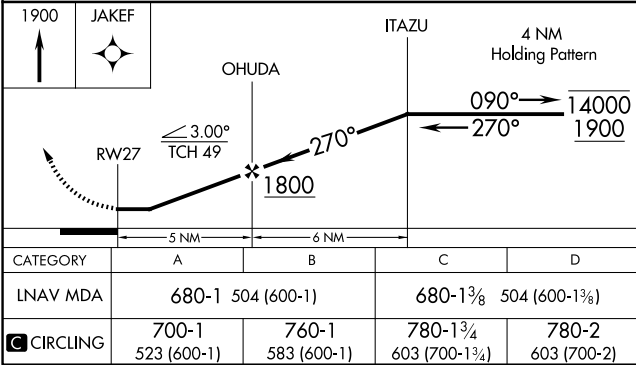
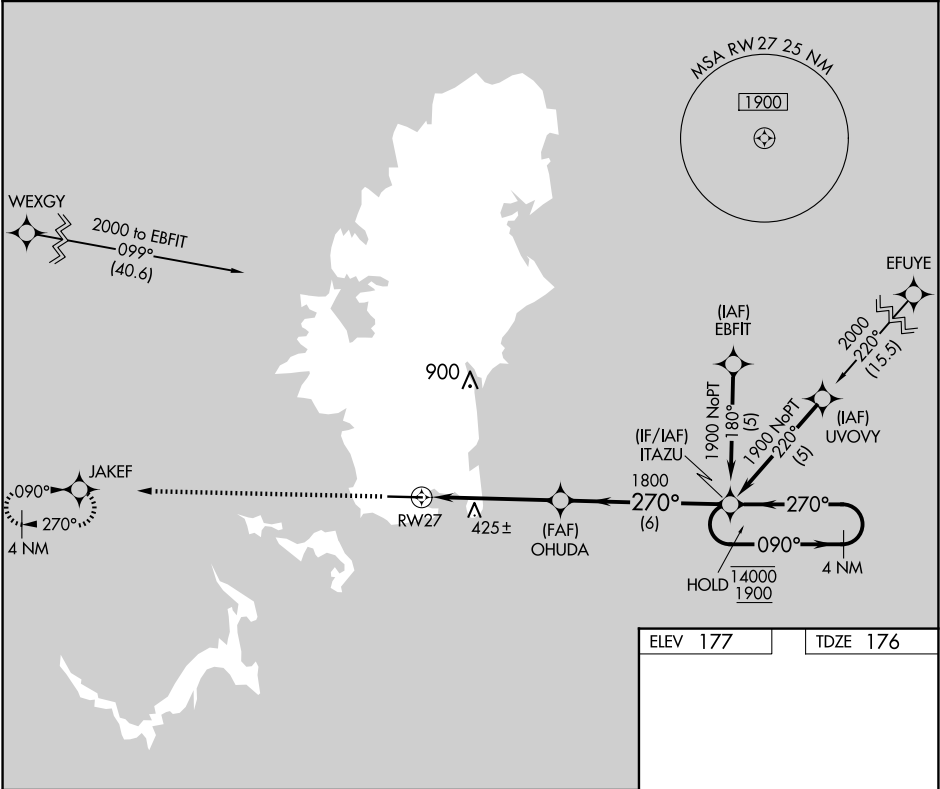
APP CRS	Rwy Idg	7200
270°	TDZE	176
	Apt Elev	177

RNAV (GPS) RWY 27

PALAU INTL (ROR)(PTRO)

RNP APCH-GPS.	
<div><div>⚠</div><div>Circling NA north of Rwy 9-27. Rwy 27 helicopter visibility reduction below ¾ SM NA. Obtain local altimeter setting on CTAF; when not received, procedure NA. No controlled airspace below 5500.</div></div>	MISSED APPROACH: Climb to 1900 direct JAKEF and hold.

KOROR RADIO
123.6 (CTAF) 0



PAC, 07 AUG 2025 to 02 OCT 2025

PAC, 07 AUG 2025 to 02 OCT 2025