

NDB/DME ROR

371

APP CRS

087°

Rwy Idg

7200

TDZE

177

Apt Elev

177

Chan

104 (115.7)

NDB RWY 9

PALAU INTL (ROR)(PTRO)

⚠

Circling NA north of Rwy 9-27.

⚠

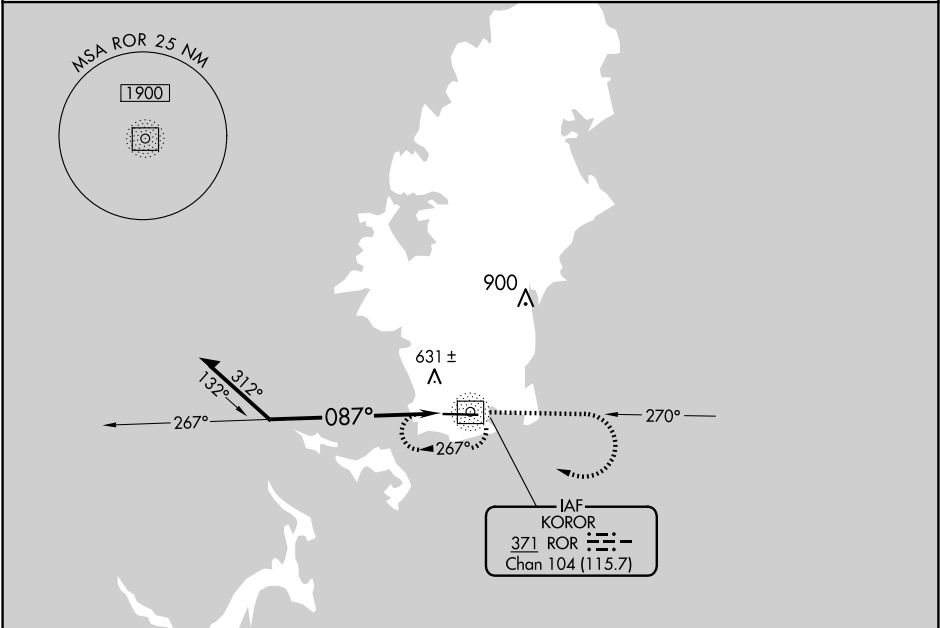
Rwy 9 helicopter visibility reduction below ¾ SM NA.

Obtain local altimeter setting on CTAF; when not received, procedure NA. No controlled airspace below 5500.

MISSED APPROACH: Climb to 1900 on ROR bearing 090° then right turn direct ROR NDB/DME and hold.

KOROR RADIO

123.6 (CTAF) 1



ELEV 177

TDZE 177

Remain within 10 NM

1900

267°

087°

ROR NDB/DME

1900

ROR 090°

ROR

087°

7200 X 150

27

CATEGORY	A	B	C	D
S-9	1000-1 823 (900-1)	1000-1¼ 823 (900-1¼)	1000-2½ 823 (900-2½)	823 (900-2½)
CIRCLING	1000-1¼ 823 (900-1¼)		1000-2½ 823 (900-2½)	1000-2¾ 823 (900-2¾)

MRL Rwy 9-27 1

REIL Rwys 9 and 27

PAC, 07 AUG 2025 to 02 OCT 2025

PAC, 07 AUG 2025 to 02 OCT 2025