

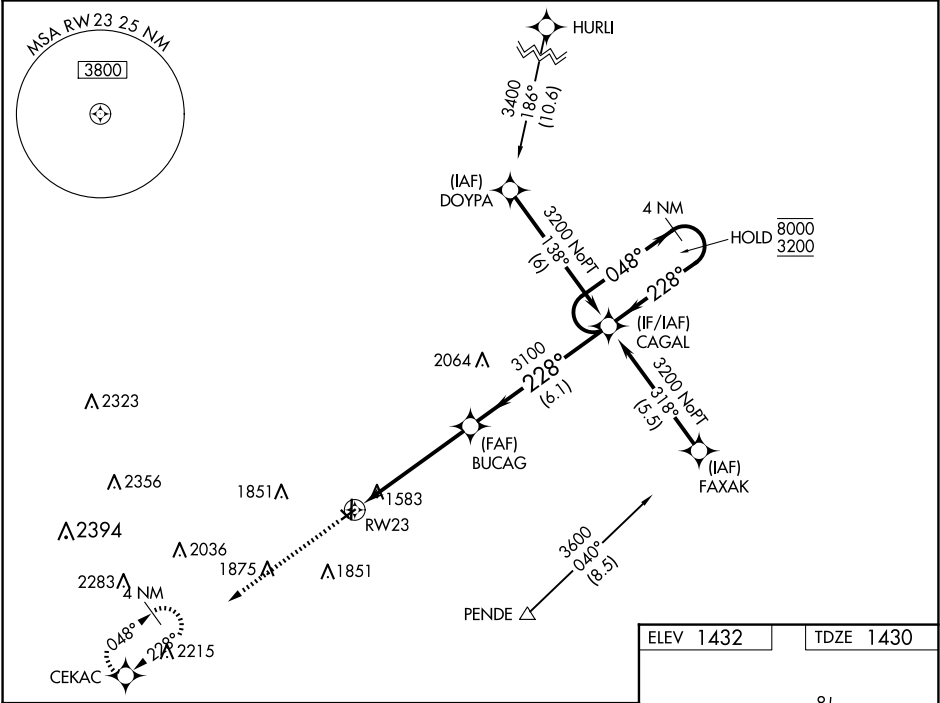
WAAS CH 82523 W23A	APP CRS 228°	Rwy Idg TDZE 1430 Apt Elev 1432
--	------------------------	---

RNAV (GPS) RWY 23

WAYNE MUNI/STAN MORRIS FLD (L/G)

RNP APCH. Circling NA to Rwy 13 and 31. Rwy 23 helicopter visibility reduction below 3/4 SM NA. For uncompensated Baro-VNAV systems, LNAV/VNAV NA below -17°C or above 54°C.	MISSED APPROACH: Climb to 3400 direct CEKAC and hold.
---	---

AWOS-3 120.125	SIoux CITY APP CON ★ 124.6 307.0	UNICOM 122.8 (CTAF) 1
--------------------------	--	---------------------------------



3400	CEKAC	BUCAG	CAGAL	4 NM Holding Pattern
*LNAV only	*1.5 NM to RW23	3100	228°	8000 3200
RW23	1.5 NM	3.6 NM	6.1 NM	GP 3.00° TCH 40
CATEGORY	A	B	C	D
LPV DA	1866-1½	436 (500-1½)	NA	NA
LNAV/VNAV DA	1869-1½	439 (500-1½)	NA	NA
LNAV MDA	1940-1	510 (600-1)	NA	NA
CIRCLING	2000-1	568 (600-1)	NA	NA

