

APP CRS
194°

Rwy Idg
6001

TDZE
3701

Apt Elev
3706

RNAV (GPS) RWY 19
MOORE COUNTY (DUX)

RNP APCH - GPS.

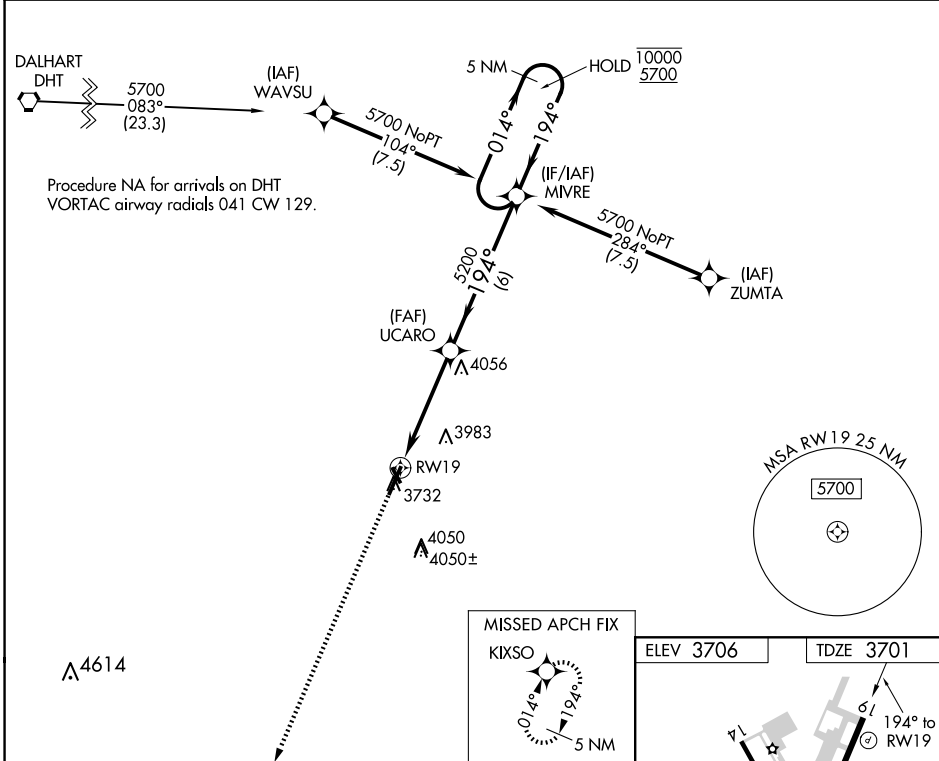
▼

▲

Circling Rwy 14, 32 NA at night.
Rwy 19 helicopter visibility reduction below ¾ SM NA.

MISSED APPROACH: Climb to 5700 direct KIXSO and hold.

AWOS-3 118.075	ALBUQUERQUE CENTER 127.85 285.475	UNICOM 122.8 (CTAF) 0
-------------------	--------------------------------------	--------------------------



5700 KIXSO

5 NM Holding Pattern

RWY 19

UCARO

5200

10000 5700

014° 194°

1.1 NM to RWY 19

3.00° TCH 50

1.1 NM 3.5 NM 6 NM

CATEGORY	A	B	C	D
LNAV MDA	4100-1	399 (400-1)	4100-1½	399 (400-1½)
CIRCLING	4100-1 394 (400-1)	4300-1 594 (600-1)	4400-2 694 (700-2)	4400-2¼ 694 (700-2¼)

Y1

61

194° to RWY 19

31001-60

4001 X 60

MIRL Rwy 1-19 0

MIRL Rwy 14-32

SC-2, 07 AUG 2025 to 04 SEP 2025

SC-2, 07 AUG 2025 to 04 SEP 2025