

MONTE VISTA, COLORADO

AL-6427 (FAA)

25163

WAAS CH <b>45840</b> <b>W20A</b>	APP CRS <b>201°</b>	Rwy Ldg <b>5902</b> TDZE <b>7610</b> Apt Elev <b>7611</b>
--	------------------------	---

RNAV (GPS) RWY 20  
MONTE VISTA MUNI (MVI)

**T** Circling NA to Rwy 10, 28, 16 and 34. DME/DME RNP-0.3 NA.  
**A** Baro-VNAV NA. Use Alamosa altimeter setting.

MISSED APPROACH: (Do not exceed 190K until LOGBY) Climb to 8100 on heading 201° then climbing right turn to 9700 direct LOGBY and hold.

ALS AWOS-3 <b>135.175</b>	DENVER CENTER <b>128.375 379.95</b>	UNICOM <b>122.8 (CTAF) ①</b>
------------------------------	--	---------------------------------

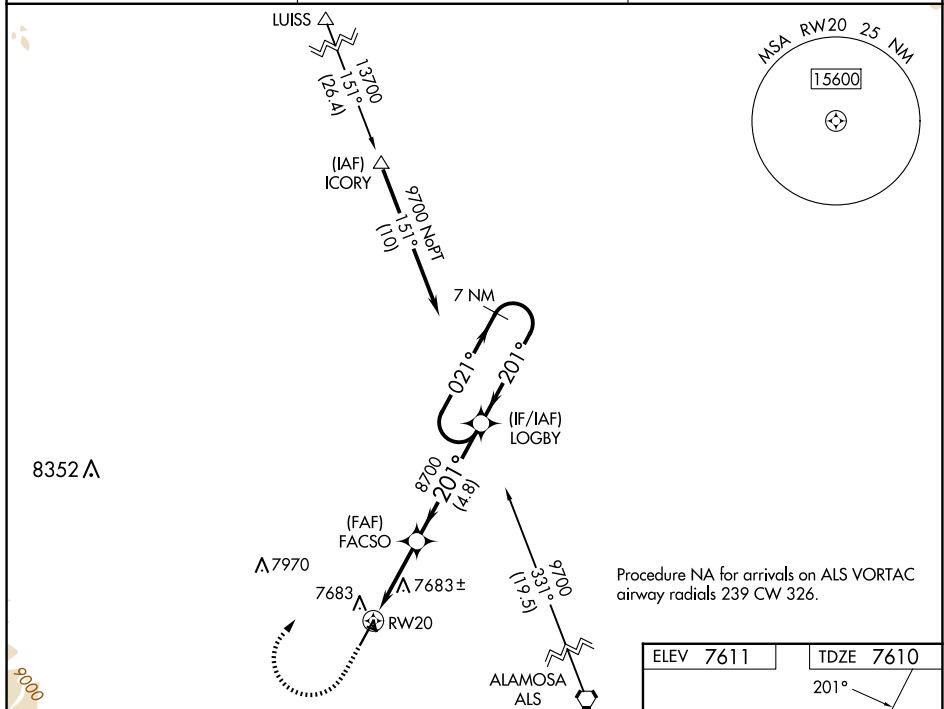
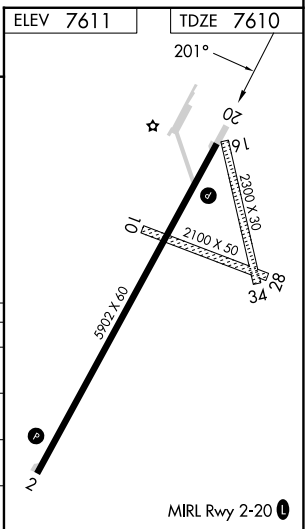


Diagram illustrating a circling approach for RW20. The diagram shows a 7 NM Holding Pattern at 8700 feet. The approach is a circling approach with a 3.00° TCH. The diagram includes a 7 NM Holding Pattern, a 3.3 NM segment, and a 4.8 NM segment. The approach is labeled with 'FACSO' and 'RW20'. The diagram also shows a 'LOGBY' symbol and a 'VGS1 and RNAV glidepath not coincident (VGS1 Angle 3.00/TCH 38)' note. The diagram includes a '7 NM Holding Pattern' and a 'GP 3.00° TCH 52'.



MONTE VISTA, COLORADO  
Orig 14SEP17

37°32'N-106°03'W

MONTE VISTA MUNI (MVI)  
RNAV (GPS) RWY 20

SW-1, 07 AUG 2025 to 04 SEP 2025