

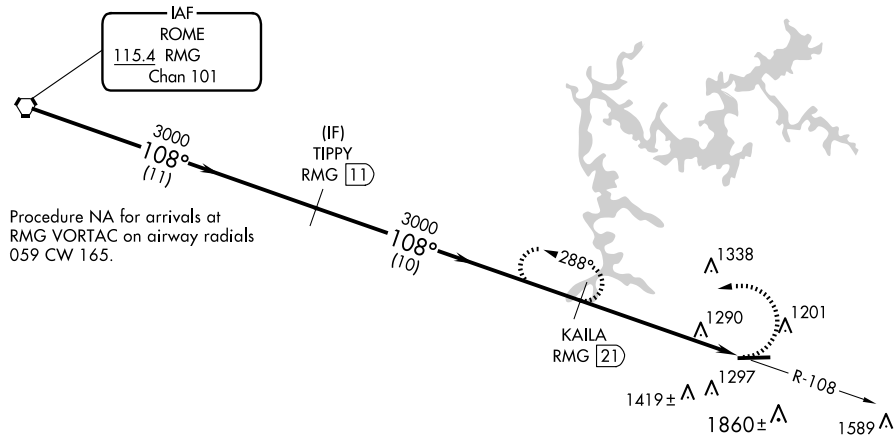
25079

VOR/DME RWY 9
COBB COUNTY INTL/MCCOLLUM FLD (RYY)

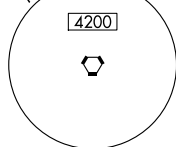
Rwy 9 helicopter visibility reduction below 1 SM NA. When local altimeter setting not received, use ATL altimeter setting and increase all MDAs 60 feet and S-9 Cat A/C/D visibilities ¼ mile.

MISSED APPROACH: Climbing left turn to 3000 via heading 240° and RMG R-108 to KAILA/21 DME and hold.

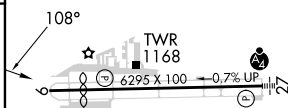
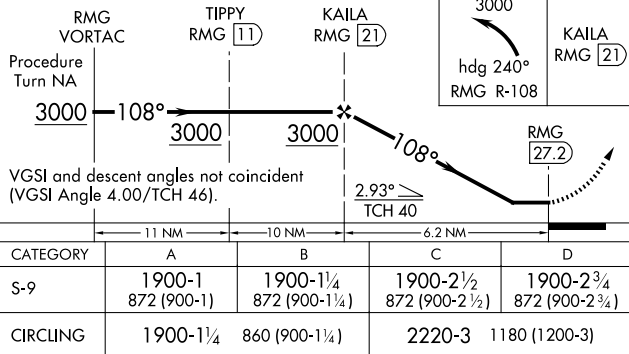
ATIS 128.125	ATLANTA APP CON 121.0 268.7	MCCOLLUM TOWER ★ 125.9 (CTAF) 0	GND CON 119.0	CLNC DEL 119.0	CLNC DEL 121.0 268.7 (When twr closed)	UNICOM 122.7
------------------------	---------------------------------------	---	-------------------------	--------------------------	---	------------------------



MSA RMG 30 NM



ELEV 1040	D	TDZE 1028
-----------	----------	-----------

HIRL Rwy 9-27 **L**

VOR/DME RWY 9

SE-4, 07 AUG 2025 to 04 SEP 2025