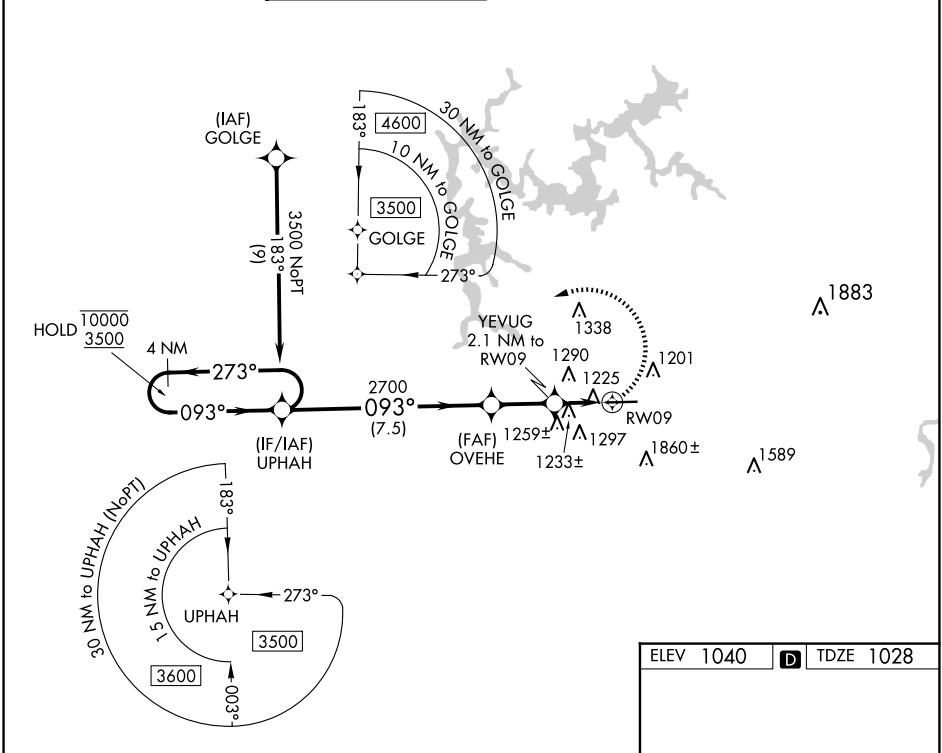


WAAS CH 61144 W09A	APP CRS 093°	Rwy ldg TDZE 1028 Apt Elev 1040
--	------------------------	---

RNAV (GPS) RWY 9

COBB COUNTY INTL/MCCOLLUM FLD (RYY)

RNP APCH-GPS.		MISSED APPROACH: Climbing left turn to 3500 direct UPHAH and hold.			
▼ ▲ Rwy 9 helicopter visibility reduction below 1 SM NA.		ATIS 128.125	ATLANTA APP CON 121.0 268.7	MCCOLLUM TOWER ★ 125.9 (CTAF) 0	GND CON 119.0
		CLNC DEL 119.0	CLNC DEL 121.0 268.7 (When twr closed)	UNICOM 122.7	



4 NM Holding Pattern UPHAH		VGSI and descent angles not coincident (VGSI Angle 4.00/TCH 46).		3500	UPHAH
10000 3500		093°		093°	093°
7.5 NM		2.3 NM		2.1 NM	
CATEGORY	A	B	C	D	
LP MDA	1480-1	452 (500-1)	1480-1 $\frac{3}{8}$	452 (500-1 $\frac{3}{8}$)	
LNAV MDA	1500-1	472 (500-1)	1500-1 $\frac{3}{8}$	472 (500-1 $\frac{3}{8}$)	
CIRCLING	1800-1	760 (800-1)	2180-3	1140 (1200-3)	