

25079

RNAV (GPS) RWY 27
COBB COUNTY INTL/MCCOLLUM FLD (RYY)

RNP APCH-GPS.

T Inop table does not apply to LPV. For uncompensated Baro-VNAV systems, **A** LNAV/VNAV NA below -17°C or above 54°C. For inop ALS, increase LNAV/VNAV all Cats and LNAV Cats C and D visibility to 1 $\frac{3}{8}$ SM.

MALSF

MISSED APPROACH:
Climb to 3500 direct
UPHAH and hold.

ATIS
128,125

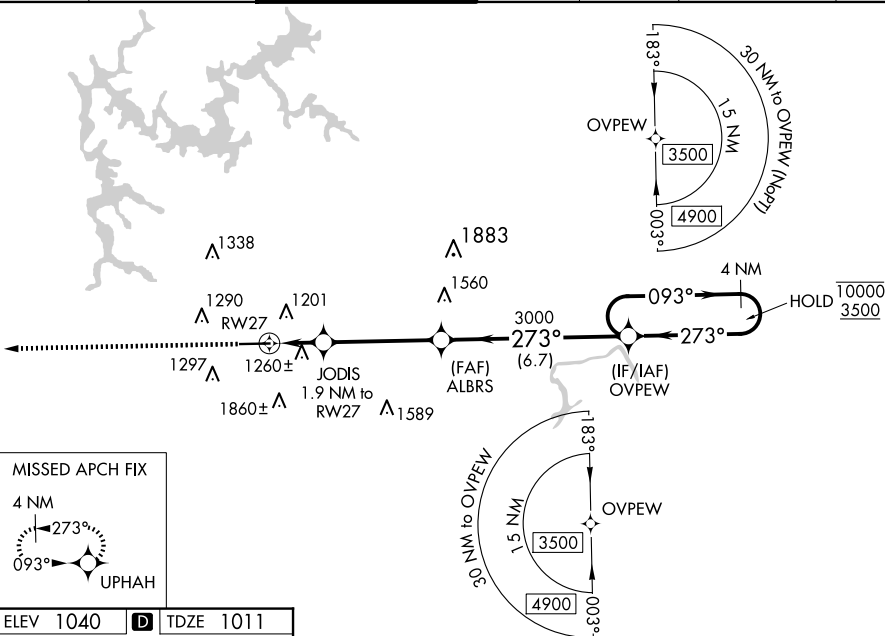
ATLANTA APP CON
121.0 268.7

MCCOLLUM TOWER ★
125.9 (CTAF) L

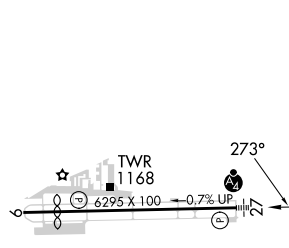
GND CON
119.0



CLNC DE
119.0

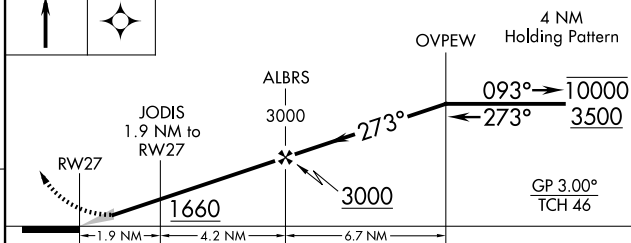
CLNC DEL
121.0 268.7
(When twr closed)

UNICOM
122.7

ELEV 1040	D	TDZE 1011
-----------	----------	-----------



3500	UPHAH
	



CATEGORY	A	B	C	D
LPV DA	1211-¾ 200 (200-¾)			
LNAV/ VNAV DA	1520-1¼ 509 (500-1¼)			
LNAV MDA	1520-¾ 509 (500-¾)	1520-1¼ 509 (500-1¼)		
C CIRCLING	1800-1 760 (800-1)	2180-3 1140 (1200-3)		

HIRL Rwy 9-27 **L**

ATLANTA, GEORGIA
Amdt 5A 20MAR25

COBB COUNTY INTL/MCCOLLUM FLD (RYY)

34°01'N-84°36'W

RNAV (GPS) RWY 27

SE-4, 07 AUG 2025 to 04 SEP 2025