

FORT INDIANTOWN GAP, PENNSYLVANIA

COPTER RNAV (GPS) RWY 25

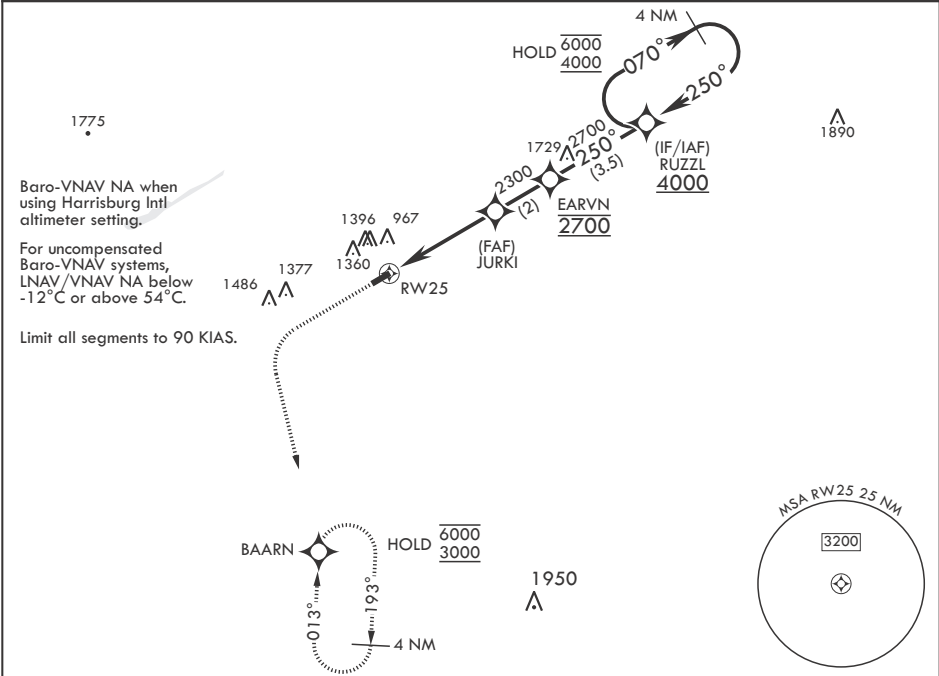
WAAS CH 95177 W25A	APCH CRS 250°	Rwy ldg TDZE Arpt Elev	3860 487 487
--------------------------	------------------	------------------------------	--------------------

- (USA)

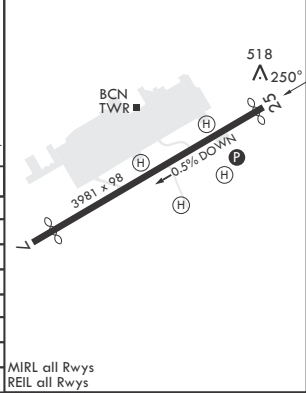
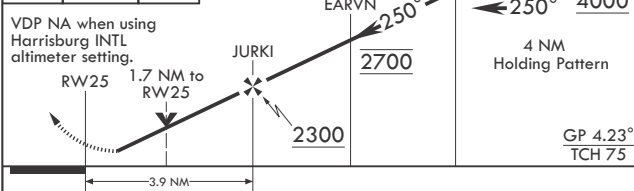
MUIR AHP (KMUI)

RNP APCH - GPS	MISSED APPROACH: Climb to 1700 then climbing left turn to 3000 direct to BAARN and hold.
* When local altimeter not received, use Harrisburg Intl altimeter setting. Increase all DA by 64', vis by 1/8 miles. ** When local altimeter not received, use Harrisburg Intl altimeter setting. Increase MDA 80', vis 1/4 miles.	

ASOS 124.175	HARRISBURG APP CON/DEP CON 118.25 269.45	TOWER ★ 126.2 (CTAF) 290.325	GND CON 135.675 269.525
-----------------	---------------------------------------------	---------------------------------	----------------------------



1700	3000	BAARN	VGSI and descent angles not coincident.	RUZZL	ELEV 487	TDZE 487
					Rwy 7 ldg 3631'	Rwy 25 ldg 3860'



CATEGORY	COPTER
LPV DA*	816-1 329 (400-1)
LNAV/VNAV DA*	1166-1 679 (700-1)
LNAV MDA**	1300-1 813 (900-1)
WITH HARRISBURG INTL ALTIMETER SETTING	
LPV DA	880-1 393 (400-1)
LNAV/VNAV DA	1230-2 743 (800-2)
LNAV MDA	1380-1 893 (900-1)

FORT INDIANTOWN GAP, PENNSYLVANIA 40°26'N - 76°34'W MUIR AHP (KMUI)

NE-4, 07 AUG 2025 to 04 SEP 2025

NE-4, 07 AUG 2025 to 04 SEP 2025