

VOR/DME SEG 110.4 Chan 41	APP CRS 088°	Rwy Ldg 3297 TDZE 879 Apt Elev 881
---	------------------------	---

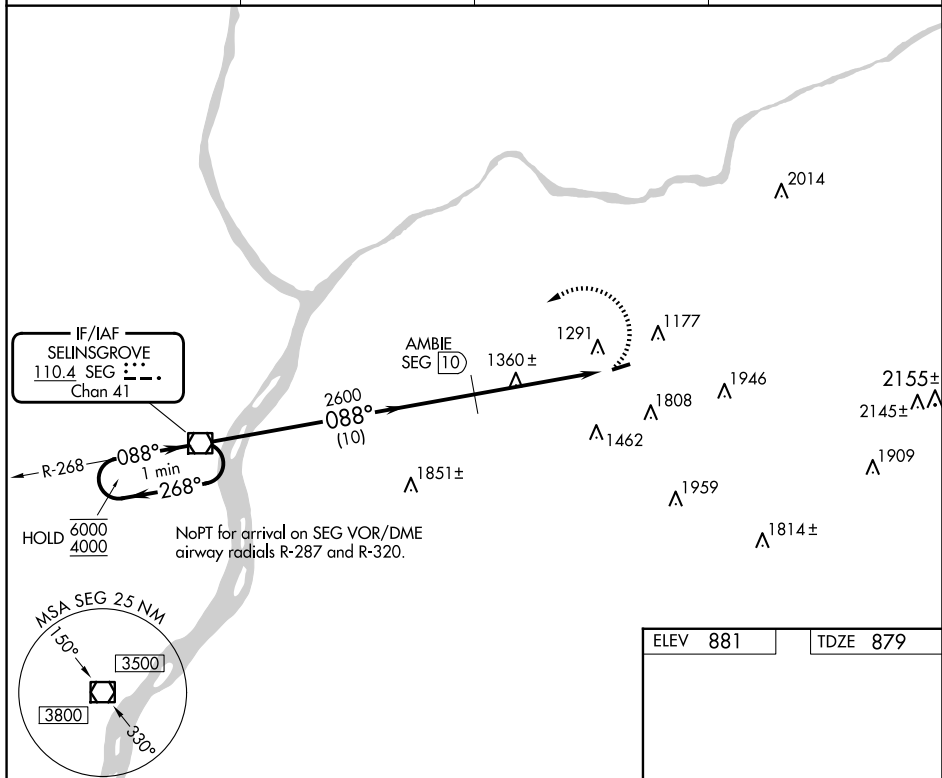
VOR RWY 8
NORTHUMBERLAND COUNTY (N79)

DME required.

T A NA	Rwy 8 helicopter visibility reduction below $\frac{3}{4}$ SM NA. When local altimeter setting not received, use Selinsgrove altimeter setting and increase all MDAs 100 feet.
-------------------------	--

MISSED APPROACH: Climbing
left turn to 4000 direct
SEG VOR/DME and hold.

AWOS-3 119.175	HARRISBURG APP CON 118.25 269.45	UNICOM 122.8 (CTAF)	121.8 0
--------------------------	--	-------------------------------	-----------------------



One Minute Holding Pattern

SEG VOR/DME

4000

SEG

6000 ← 268°

4000 → 088°

3500

088°

AMBIE SEG 10

3.16°

TCH 40

SEG 11.8

2600

SEG 15.1

10 NM

1.8 NM

3.3 NM

CATEGORY	A	B	C	D
S-8	1960-1¼ 1081 (1100-1¼)	1960-1½ 1081 (1100-1½)	1960-3 1081 (1100-3)	NA
CIRCLING	1960-1¼ 1079 (1100-1¼)	1960-1½ 1079 (1100-1½)	2120-3 1239 (1300-3)	NA

Diagram illustrating the FAF to MAP segment of the approach. The diagram shows a 0.8% UP climb gradient. The distance is 3297 X 75. The heading is 088°. The diagram also shows the MRL Rwy 8-26 and REIL Rws 8 and 26.

VOR RWY 8