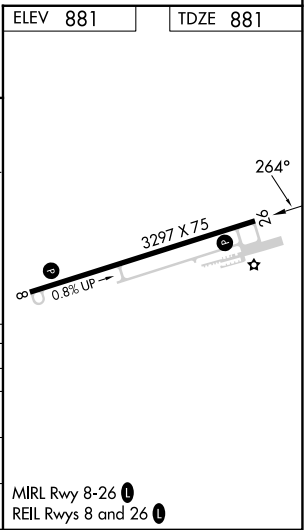
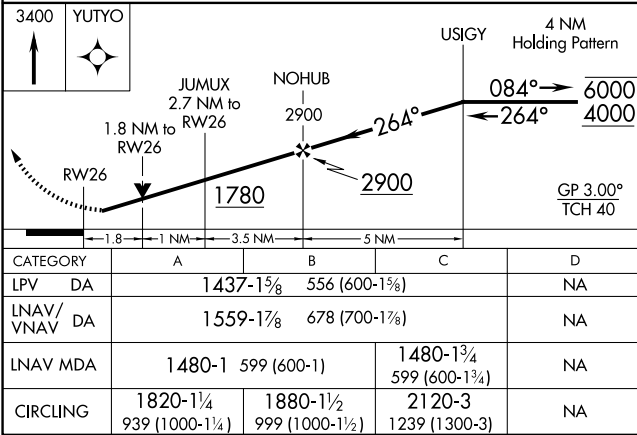
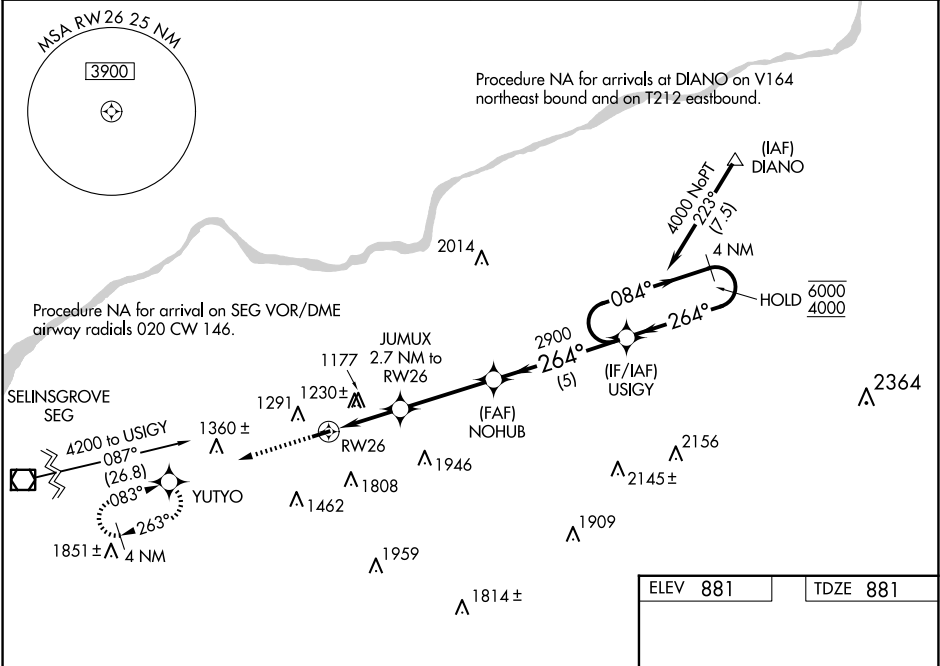


WAAS CH <b>50424</b> <b>W26A</b>	APP CRS <b>264°</b>	Rwy Ldg TDZE <b>881</b> Apt Elev <b>881</b>
--	------------------------	---

RNAV (GPS) RWY 26  
NORTHUMBERLAND COUNTY (N79)

RNP APCH - GPS.			
<div><div><div>▼</div><div>▲ NA</div></div></div>	Baro-VNAV and VDP NA when using Selinsgrove altimeter setting. Rwy 26 helicopter visibility reduction below ¾ SM NA. For uncompensated Baro-VNAV systems, LNAV/VNAV NA below -16°C or above 54°C. When local altimeter setting not received, use Selinsgrove altimeter setting and increase LPV DA to 1529 feet and all visibilities ¼ SM. Increase LNAV/VNAV DA to 1651 feet and all visibilities ⅓ SM. Increase all MDAs 100 feet and LNAV visibility Cat C ¼ SM.		MISSED APPROACH: Climb to 3400 direct YUTYO and hold, continue climb-in-hold to 3400.
AWOS-3 119.175	HARRISBURG APP CON 118.25 269.45	UNICOM 122.8 (CTAF)	121.8 0



NE-4, 07 AUG 2025 to 04 SEP 2025

NE-4, 07 AUG 2025 to 04 SEP 2025