

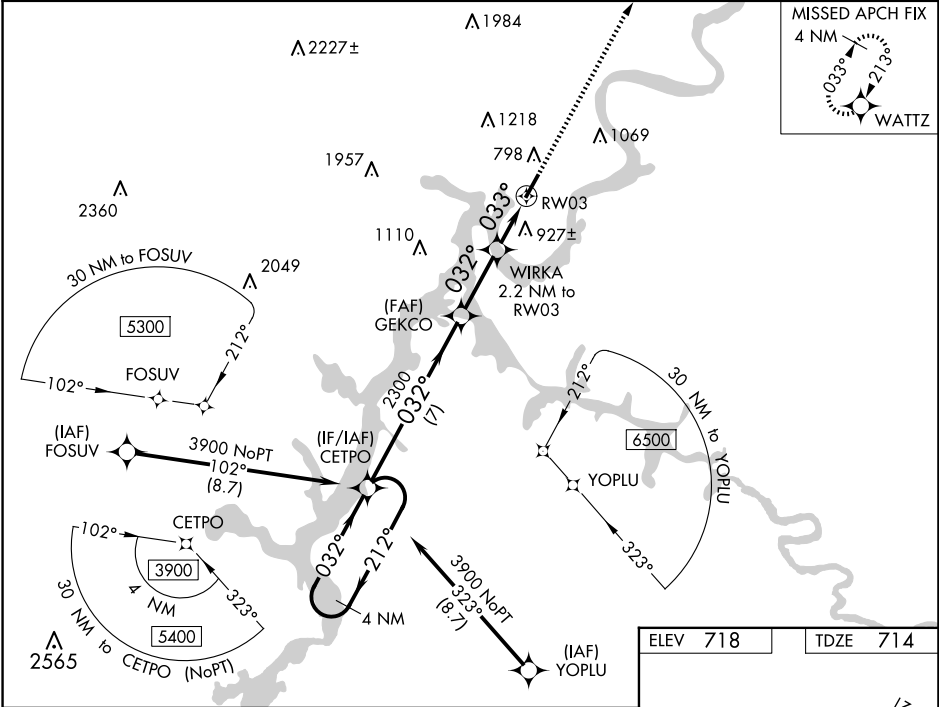
WAAS CH 86922 W03A	APP CRS 033°	Rwy Idg TDZE 714 Apt Elev 718	5001 714 718
--	------------------------	---	---

RNAV (GPS) RWY 3
MARK ANTON (2A0)

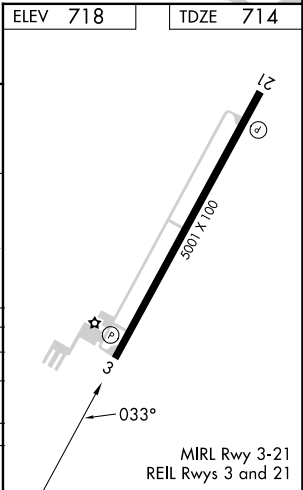
Baro-VNAV NA when using Chattanooga altimeter setting. For uncompensated Baro-VNAV systems, LNAV/VNAV NA below -16°C (4°F) or above 39°C (102°F). DME/DME RNP-0.3 NA. VDP NA with Chattanooga altimeter setting. When VGSI inop, Circling Rwy 21 NA at night. When local altimeter setting not received, use Chattanooga altimeter setting: increase LPV DA to 1039 feet, LNAV/VNAV DA to 1288 feet, and visibility LPV and LNAV/VNAV all Cats ½ SM; increase all MDA 80 feet and visibility LNAV Cat C/D ¼ SM and Circling Cat C ½ SM. Rwy 3 helicopter visibility reduction below ¾ SM NA. Rwy 21 helicopter visibility reduction below 1 SM NA.

MISSED APPROACH:
Climb to 3900 direct
WATTZ and hold.

AWOS-3 135.075	CHATTANOOGA APP CON ★ 125.1 379.1	UNICOM 123.0 (CTAF)
--------------------------	---	-------------------------------



4 NM Holding Pattern		CETPO		GEKCO		WIRKA		RW03	
3900		212°		032°		032°		033°	
GP 3.00°		TCH 31		2300		*1440		*1.4 NM to RW03	
A		B		C		D			
LPV DA		964-7/8		250 (300-7/8)					
LNAV/VNAV DA		1213-13/4		499 (500-13/4)					
LNAV MDA		1180-1		466 (500-1)		1180-13/8		466 (500-13/8)	
CIRCLING		1380-1		1420-1		1520-21/4		1620-3	
		662 (700-1)		702 (800-1)		802 (900-21/4)		902 (1000-3)	



SE-1, 07 AUG 2025 to 04 SEP 2025

SE-1, 07 AUG 2025 to 04 SEP 2025