

ROOSEVELT, UTAH

AL-6419 (FAA)

23110

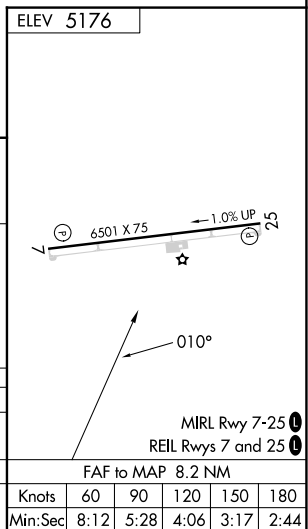
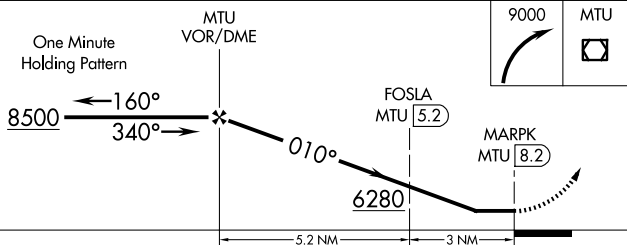
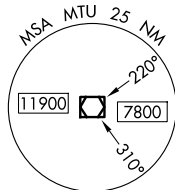
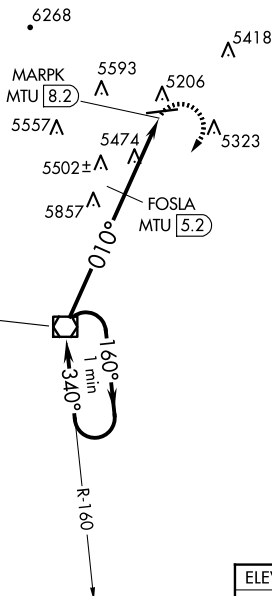
VOR/DME MTU 112.7 Chan 74	APP CRS 010°	Rwy Idg N/A TDZE N/A Apt Elev 5176
---	------------------------	---

VOR-A
ROOSEVELT MUNI (74V)

NA When local altimeter setting not received, use Vernal altimeter setting and increase all MDA 80 feet, FOSLA fix minimums, increase Cat C visibility $\frac{1}{4}$ SM.

MISSED APPROACH: Climbing right turn to 9000 direct MTU VOR/DME and hold, continue climb-in-hold to 9000.

AWOS-3P 118.975	SALT LAKE CENTER 135.77 257.7	UNICOM 122.8 (CTAF) 0
---------------------------	---	---------------------------------



CATEGORY	A	B	C	D	MIRL Rwy 7-25 REIL Rwys 7 and 25					
C CIRCLING	6280-1½ 1104 (1200-1½)	6280-1½ 1104 (1200-1½)	6280-3 1104 (1200-3)	6340-3 1164 (1200-3)						
FOSLA FIX MINIMUMS					FAF to MAP 8.2 NM					
C CIRCLING	5760-1 584 (600-1)	5900-1 724 (800-1)	6020-2½ 844 (900-2½)	6340-3 1164 (1200-3)	Knots Min:Sec	60 8:12	90 5:28	120 4:06	150 3:17	180 2:44

ROOSEVELT, UTAH
Amdt 4 10NOV16

40°17'N-110°03'W

ROOSEVELT MUNI (74V)
VOR-A