

WAAS CH 86539 W25A	APP CRS 253°	Rwy Idg TDZE Apt Elev
		6501 5140 5176

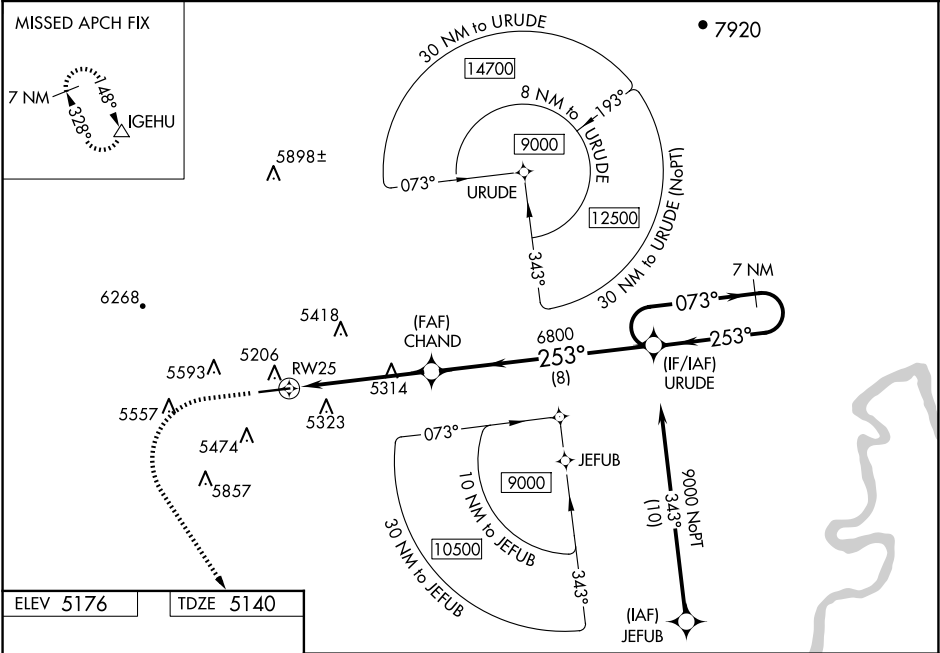
RNAV (GPS) RWY 25
ROOSEVELT MUNI (74V)

⚠ NA

For uncompensated Baro-VNAV systems, LNAV/VNAV NA below -25°C (-13°F) or above 48°C (119°F). Baro-VNAV and VDP NA when using Vernal altimeter setting. DME/DME RNP-0.3 NA. When local altimeter setting not received, use Vernal altimeter setting: increase LPV DA to 5466 and visibility 1/8 SM, LNAV/VNAV DA to 5628 and visibility 1/4 SM; increase all MDAs 80 feet and LNAV visibility Cat C and D 1/8 SM and Circling Cat C visibility 1/4 SM.

MISSED APPROACH: Climb to 5700 then climbing left turn to 10500 direct IGEHU and hold, continue climb-in-hold to 10500.

AWOS-3P 118.975	SALT LAKE CENTER 135.77 257.7	UNICOM 122.8 (CTAF) 0
---------------------------	---	---------------------------------



ELEV 5176	TDZE 5140
-----------	-----------

5700

10500

IGEHU

VGSI and RNAV glidepath not coincident (VGSI Angle 3.00/TCH 40).

CHAND

URUDE

7 NM Holding Pattern

073°

253°

9000

6800

253°

GP 3.00° TCH 51

*LNAV only.

*1.4 NM to RW25

RW25

1.4 NM

3.8 NM

8 NM

6501 X 75

1.0% UP

253°

CATEGORY	A	B	C	D
LPV DA	5390-1 250 (300-1)			
LNAV/VNAV DA	5552-1½ 412 (400-1½)			
LNAV MDA	5580-1 440 (500-1)		5580-1¼ 440 (500-1¼)	
CIRCLING	5740-1 564 (600-1)	5900-1 724 (800-1)	6020-2½ 844 (900-2½)	6340-3 1164 (1200-3)